

# FEDERAL BUREAU OF INVESTIGATION GUIDE TO CONCEALABLE WEAPONS 2003



# FORWARD

In the wake of the September 11, 2001, airline hijackings the FIREARMS AND TOOLMARKS UNIT of the FBI LABORATORY has started a collection of small and easily concealed knives. This is the first installment of a continuing effort to collect and distribute information on knives that otherwise may be dismissed as non threatening items. Many of the knives in this collection were commercially purchased and typically can be bought for less than \$20. Some of these knives are common items found in most homes and offices. You will notice also that some are made of a plastic material, making them less likely to be considered a weapon. Each of these tools was designed to cut and is fully functional in that respect. Whether used to cut paper, cardboard, or other material, these knives should be treated as potentially dangerous weapons. Each knife is shown with an accompanying scale for size reference and many include an X-ray photograph to show how these weapons might appear if placed in luggage and passed through a scanning device.

# KEY KNIFE

ASP  
MADE IN JAPAN

COMPOSITION:  
METAL

NOTE: LOOKS LIKE  
AN OVERSIZED  
KEY. STORED  
INSIDE IS A BLADE  
AND A HANDCUFF  
KEY.



# KEY

MANUFACTURER:  
UNITED CUTLERY  
MADE IN ITALY

COMPOSITION:  
METAL

NOTE:  
APPEARS TO BE  
A KEY WHEN  
PLACED ON A  
RING WITH  
OTHER. BLADE  
FOLDS OUT  
FROM END OF  
KEY.



# KEY

MANUFACTURER:  
SWISS-TECH  
MADE IN USA

COMPOSITION:  
METAL

NOTE:  
APPEARS TO BE A  
KEY WHEN  
PLACED ON A  
RING WITH  
OTHERS. OPENS  
IN A "SCISSORS-  
LIKE" FASHION TO  
EXPOSE KNIFE  
BLADE,  
SERRATED  
BLADE, AND FLAT/  
PHILLIPS HEAD  
SCREWDRIVERS.

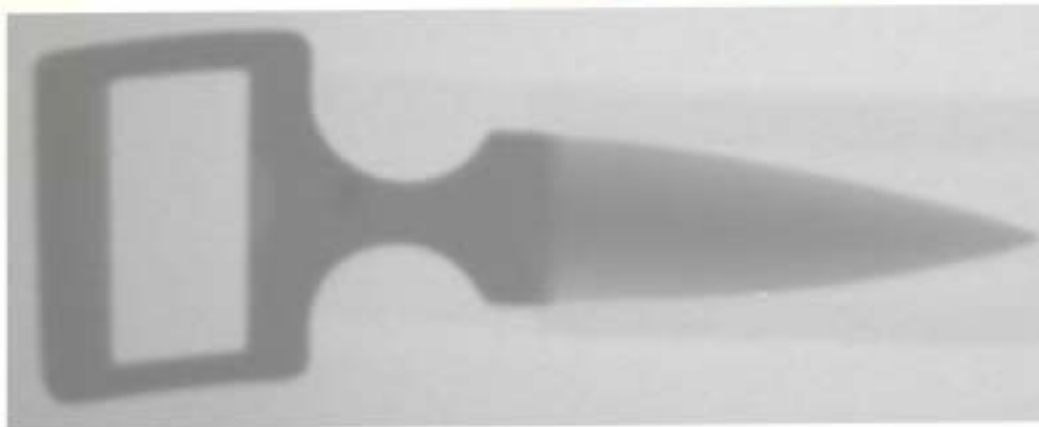


**BOWEN BELT**  
**KNIFE**

MANUFACTURER:  
BOWEN KNIVES  
MADE IN USA

COMPOSITION:  
METAL BLADE  
WITH LEATHER  
BELT

NOTE: BLADE IS  
HIDDEN INSIDE  
OF BELT, ONLY  
THE BUCKLE  
“HANDLE” IS  
SEEN.



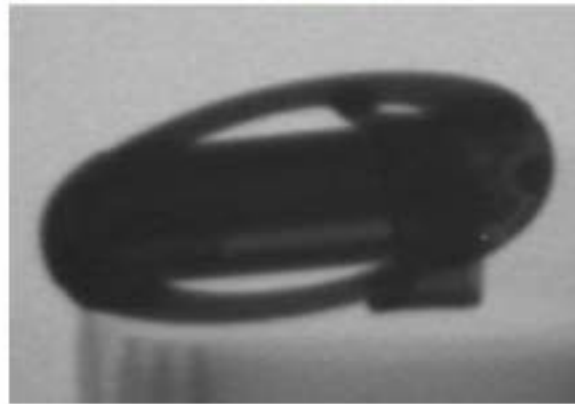


# BELT KNIFE

MANUFACTURER:  
C.A.S. IBERIA,  
INC.  
MADE IN USA

COMPOSITION:  
LEATHER AND  
METAL

NOTE: LOOKS  
LIKE AN  
ORDINARY BELT.  
BUCKLE, BUCKLE  
STORES A KNIFE  
WHICH CAN BE  
PULLED OUT,  
EXPOSING  
BLADE.

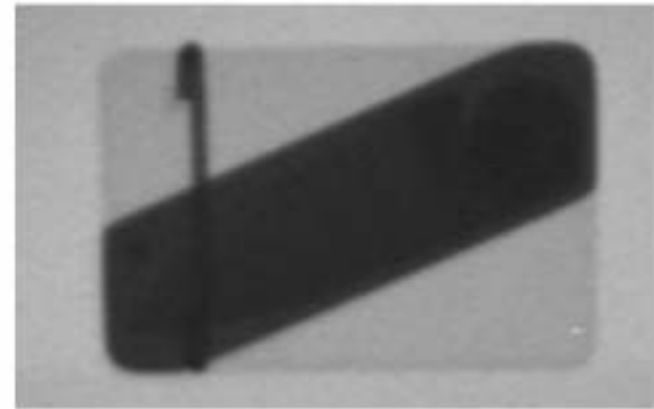


# TOUCHE' BELT BUCKLE

MANUFACTURER:  
GERBER  
MADE IN USA

COMPOSITION:  
METAL

NOTE: THE KNIFE  
BLADE FOLDS  
UNDER THE HANDLE  
WHICH CAN BE  
STORED IN THE  
FRONT OF THE BELT  
BUCKLE.





# BELT KNIFE

MANUFACTURER:  
VALOIS KNIVES  
MADE IN USA

COMPOSITION:  
METAL

NOTE:  
APPEARS AS A  
NORMAL BELT.  
THE "BUCKLE"  
PULLS FROM  
THE BELT TO  
EXPOSE  
THE BLADE.  
COMES IN  
VARIOUS STYLES.



# NECKLACE KNIFE

MANUFACTURER:  
KAICUT KNIVES,  
MODEL MOKI  
MADE IN  
GERMANY



COMPOSITION:  
STAINLESS STEEL  
WITH A  
DECORATIVE  
INLAY

NOTE: MAY BE  
WORN AS A  
NECKLACE OR  
CARRIED AS A  
KEY CHAIN.



# KEY RING KNIFE

MANUFACTURER:  
MAREX  
MADE IN KOREA

COMPOSITION:  
PLASTIC AND  
METAL

NOTE: LOOKS LIKE  
A KEY RING, BUT  
HOUSES A BLADE,  
SCISSORS AND  
FLASHLIGHT.



# KEY RING KNIFE

EKA  
MADE IN SWEDEN

COMPOSITION:  
PLASTIC AND  
METAL

NOTE: LOOKS  
LIKE A KEY RING,  
BUT HOUSES A  
BLADE AND  
BOTTLE OPENER.



# PUSH DAGGER

MANUFACTURER:  
UNITED CUTLERY  
MADE IN TAIWAN

COMPOSITION:  
PLASTIC SHEATH  
AND HANDLE WITH  
METAL BLADE

NOTE:  
SHEATH HAS A  
CLIP ALLOWING IT  
TO BE WORN ON  
BELT, BOOT, OR  
POCKET. ALSO  
COMES WITH  
LANYARD TO  
WEAR AROUND  
NECK OR  
POSSIBLY USE AS  
A KEY CHAIN.



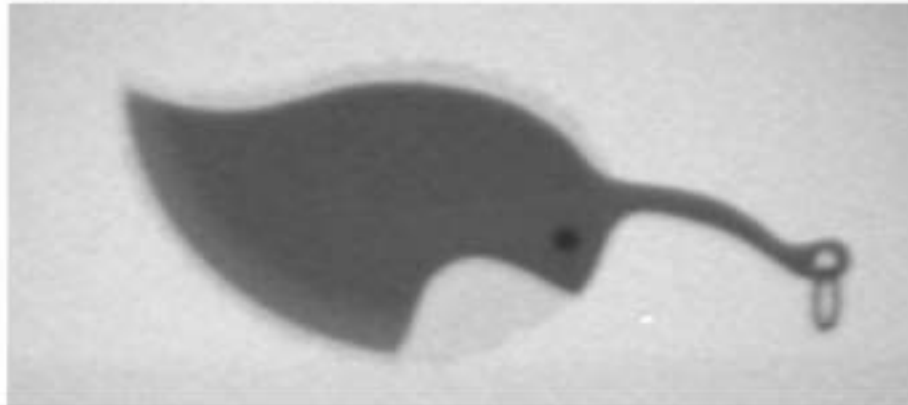


# LEAF KNIFE

MANUFACTURER:  
UNKNOWN  
MADE IN USA

COMPOSITION:  
PLASTIC AND  
METAL

NOTE: "LEAF"  
OPENS TO EXPOSE  
KNIFE BLADE.  
COMES IN AN ALL -  
STAINLESS MODEL  
"LEAF". CAN ALSO  
BE WORN ON NECK  
CHAIN OR AS A KEY  
RING.





# KUBATON

MANUFACTURER:  
UNITED CUTLERY  
MADE IN TAIWAN

COMPOSITION:  
METAL

NOTE:  
STYLES VARY BY  
MANUFACTURER.



# KEY RING KNIFE

MANUFACTURER:  
ZELCO  
MADE IN USA



COMPOSITION:  
METAL BLADE  
WITH TWO-PIECE  
PLASTIC HANDLE

NOTE: CAN BE  
USED AS A KEY  
RING OR WORN  
ON A NECK CHAIN.



# CRUCIFIX KNIFE

MANUFACTURER:  
UNKNOWN

COMPOSITION:  
NON MAGNETIC  
CROSS WITH  
METAL BLADE  
AND KEY CHAIN.

NOTE: CAN BE  
USED AS A KEY  
CHAIN OR  
NECKLACE.

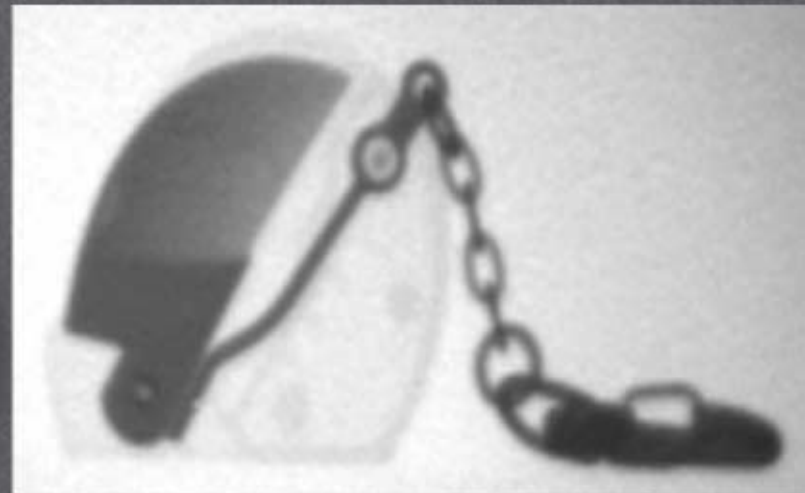


# NASCAR HELMET KNIFE

MANUFACTURER:  
ACTION RACING  
COLLECTIBLES  
MADE IN CHINA

COMPOSITION:  
PLASTIC CASE  
WITH METAL  
KNIFE BLADE.

NOTE:  
COLORS AND  
STYLES VARY  
DEPENDING ON  
THE NASCAR  
THEME.

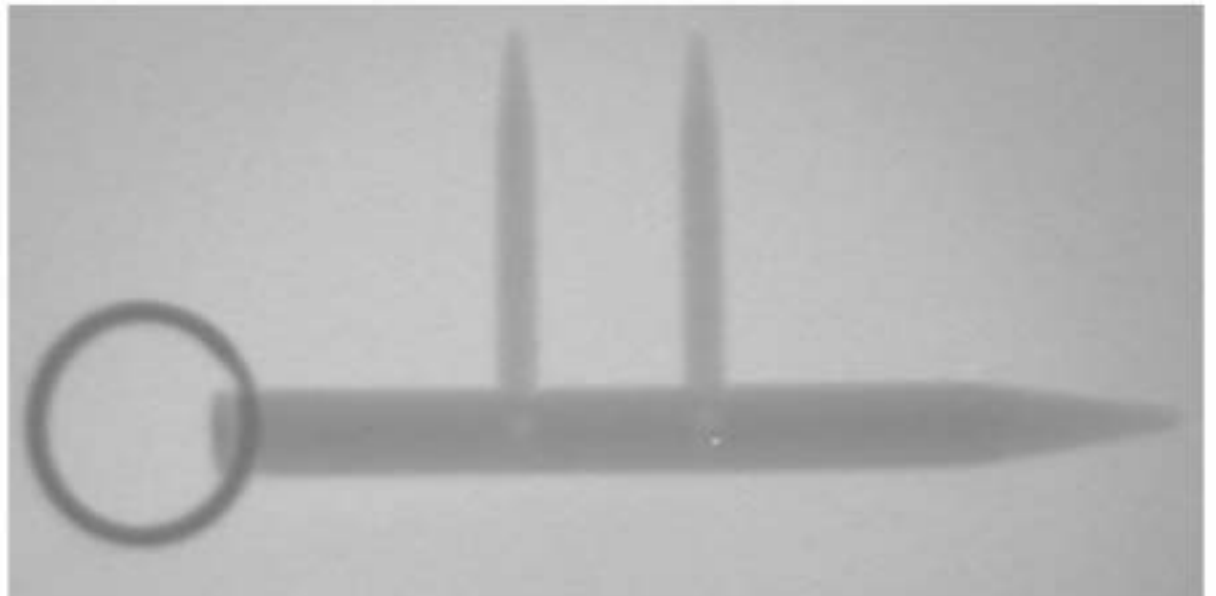


# NINJA KEY RING

MANUFACTURER:  
UNKNOWN  
MADE IN USA

COMPOSITION:  
METAL

NOTE: IMPACT  
TOOL.





**PEPPER SPRAY**  
**KEY RING**

MANUFACTURER:  
UNKNOWN  
MADE IN BRAZIL

COMPOSITION:  
TUBULAR METAL  
BODY WITH  
METAL RING

NOTE: EJECTS  
RED PEPPER  
SPRAY.



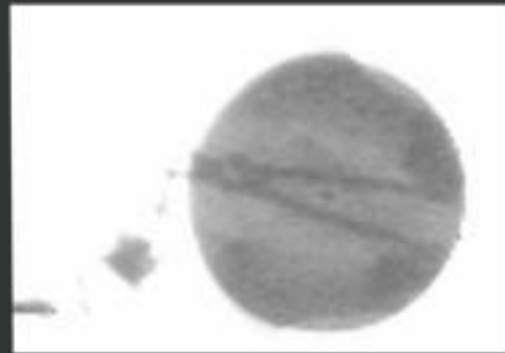


# COIN

MANUFACTURER:  
UNITED CUTLERY  
MADE IN TAIWAN

COMPOSITION:  
METAL

NOTE:  
APPEARS TO BE  
A NORMAL  
SILVER DOLLAR  
KEY CHAIN. THIS  
KNIFE MAY VARY  
IN STYLE AND  
BLADE TYPES.

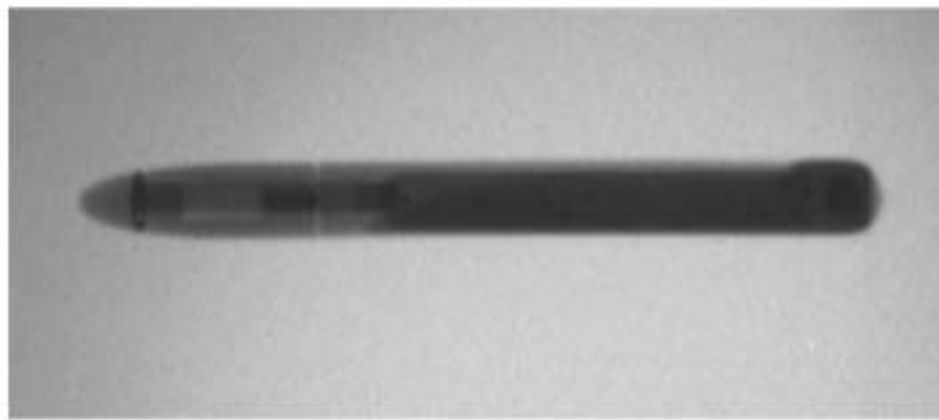


# DELTA PEN

MANUFACTURER:  
UNKNOWN  
MADE IN ?

COMPOSITION:  
METAL

NOTE: LOOKS LIKE  
AN INK PEN WHICH  
CAN BE OPENED TO  
EXPOSE A KNIFE  
BLADE.

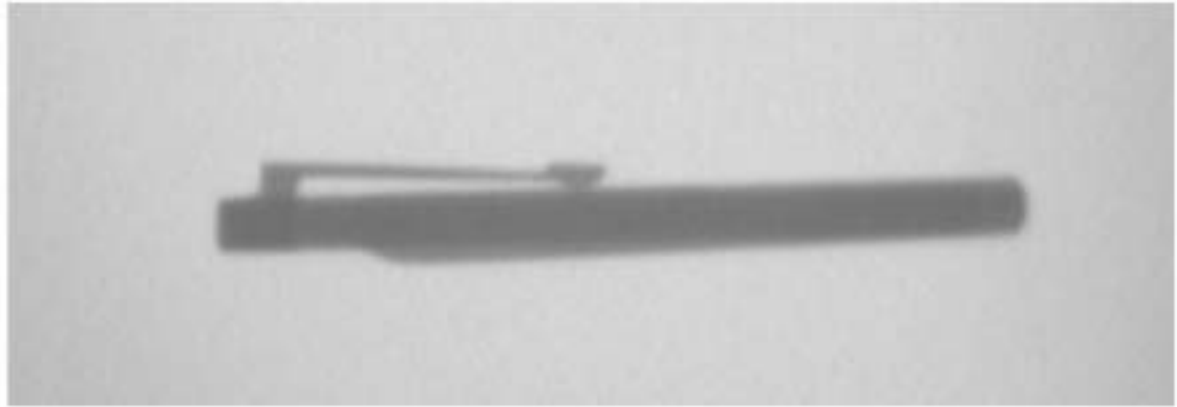


# EXECUTIVE PEN

MANUFACTURER:  
UNKNOWN  
MADE IN USA

COMPOSITION:  
METAL

NOTE: LOOKS LIKE  
A PEN WHICH CAN  
BE OPENED TO  
EXPOSE A KNIFE  
BLADE. COMES IN  
VARIOUS SIZES.



# AUTO-SPIKE

MANUFACTURER:  
S.W.A.T.  
MADE IN USA

COMPOSITION:  
METAL SPIKE  
WITH METAL  
HANDLE

NOTE: SPRING  
LOADED SPIKE  
DEPLOYED BY  
AUTO RELEASE.



# WALKER SWORD

MANUFACTURER:  
UNKNOWN  
MADE IN USA

COMPOSITION:  
METAL

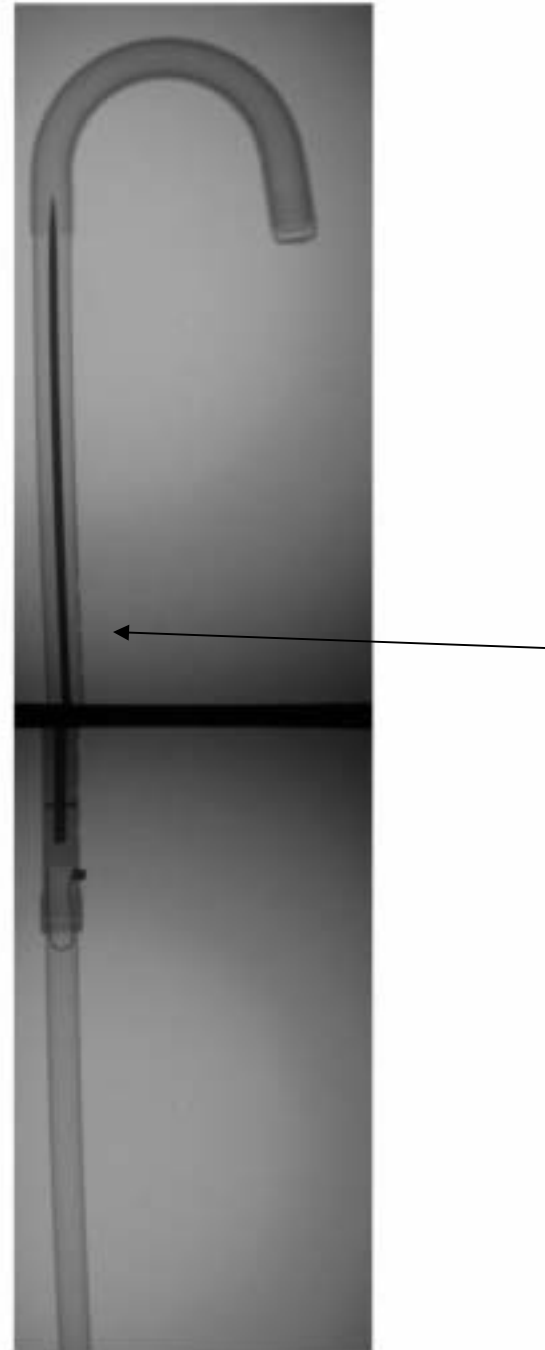
NOTE: LOOKS LIKE  
AN ORDINARY  
WALKING CANE.  
EXPANDABLE SHAFT  
CAN BE REMOVED  
FROM HANDLE  
PORTION TO EXPOSE  
KNIFE BLADE.

**CANE  
LENGTH  
36 inches**





THE SHAFT OF THIS CANE  
IS REMOVED TO EXPOSE THE KNIFE  
BLADE. THE BLADE COULD ALSO BE  
FITTED IN A WALKER/CRUTCH.





# CANE SWORD

MANUFACTURER:  
MADE IN USA

COMPOSITION:  
METAL

NOTE: LOOKS LIKE  
AN ORDINARY  
CANE. HANDLE  
UNSCREWS TO  
EXPOSE KNIFE  
BLADE.

**CANE  
HEIGHT  
36 inches**





THE HANDLE OF THE CANE  
IS REMOVED TO EXPOSE  
THE KNIFE BLADE.



# SWORD UMBRELLA

MANUFACTURER:  
ATLANTA CUTLERY  
MADE IN USA

COMPOSITION:  
METAL AND  
PLASTIC

NOTE:  
APPEARS AS A  
NORMAL FOLDING  
UMBRELLA,  
HANDLE PULLS  
FREE TO EXPOSE  
A 10-INCH STEEL  
SPIKE.

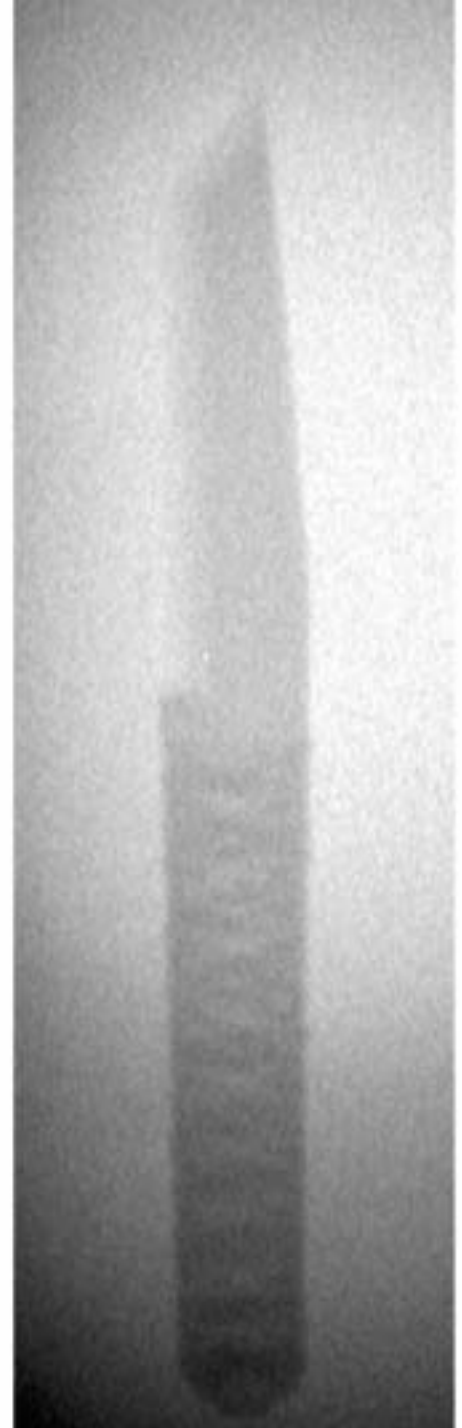


# CARBON FIBER KNIFE

MANUFACTURER:  
UNKNOWN  
MADE IN USA

COMPOSITION: PLASTIC

NOTE:  
ALL PLASTIC MAKING THIS  
“INVISIBLE” TO  
AMAGNATOMETER.

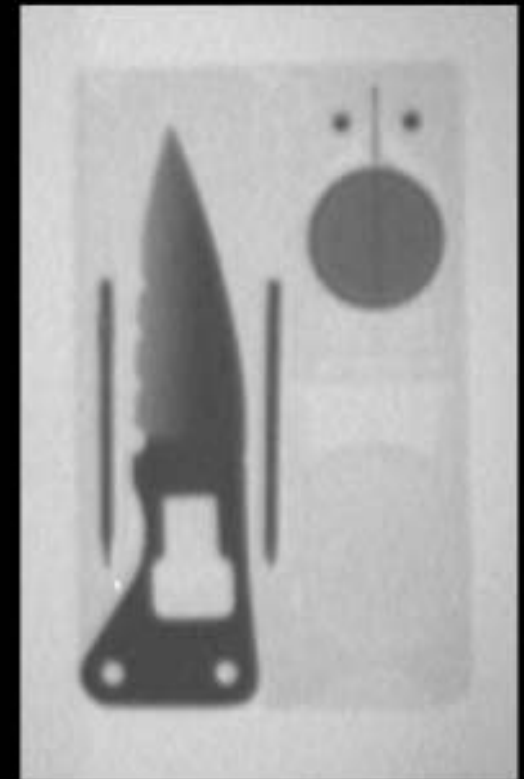


# TOOL CARD

MANUFACTURER:  
UNKNOWN

COMPOSITION:  
PLASTIC WITH  
METAL KNIFE  
BLADE

NOTE:  
MAGNIFYING  
GLASS, TWO  
SCREWDRIVERS  
AND FLASHLIGHT  
DESIGNED TO BE  
THE APPROX-  
IMATE SIZE OF A  
CREDIT CARD  
THAT CAN  
BE CARRIED IN A  
POCKET.

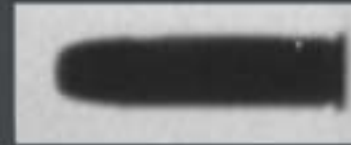


**BULLET**  
**(CARTRIDGE)**  
**KNIFE**

MANUFACTURER:  
UNITED CUTLERY  
MADE IN ITALY

COMPOSITION:  
METAL BLADE  
INSIDE OF  
CARTRIDGE

NOTE: LOOKS  
LIKE A  
CARTRIDGE FOR  
A HANDGUN.  
HEADSTAMP  
READS "30-06  
SPRG".

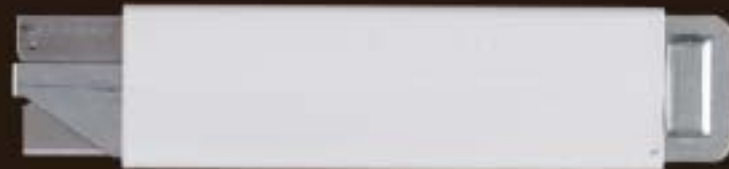
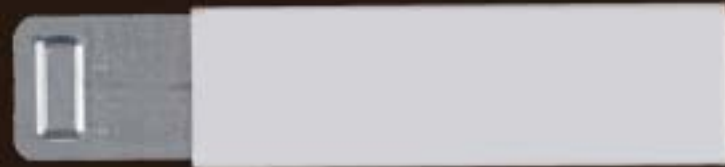
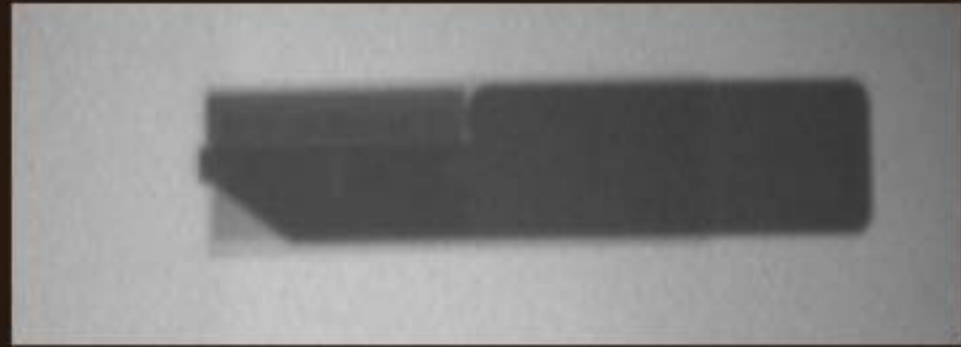




# BOX CUTTER

MANUFACTURER:  
UNKNOWN  
MADE IN USA

COMPOSITION:  
METAL RAZOR  
BLADE WITH  
METAL  
HANDLE.



# CERAMIC KNIFE

MANUFACTURER:  
KYOCERA,  
MADE IN JAPAN

COMPOSITION:  
CERAMIC BLADE  
WITH PLASTIC  
HANDLE

NOTE:  
CERAMIC  
AND  
PLASTIC;  
MAKING IT  
"INVISIBLE"  
TO A  
MAGNATO-  
METER.

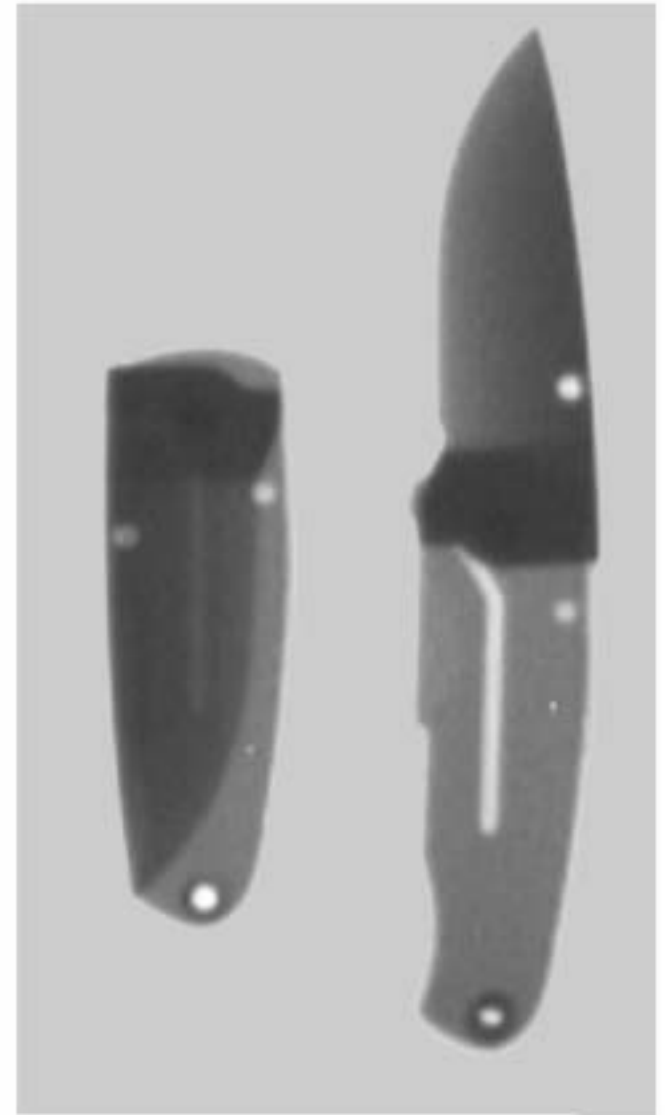


# CERAMIC FOLDING KNIFE

MANUFACTURER:  
BOKER KNIVES, MODEL  
GAMMA  
MADE IN GERMANY

COMPOSITION:  
PLASTIC CASE WITH  
CERAMIC BLADE AND  
METAL RIVETS AND  
LINER LOCK

NOTE: MINIMAL  
AMOUNT OF METAL  
MAKES THIS KNIFE  
“INVISIBLE” TO A  
MAGNATOMETER.

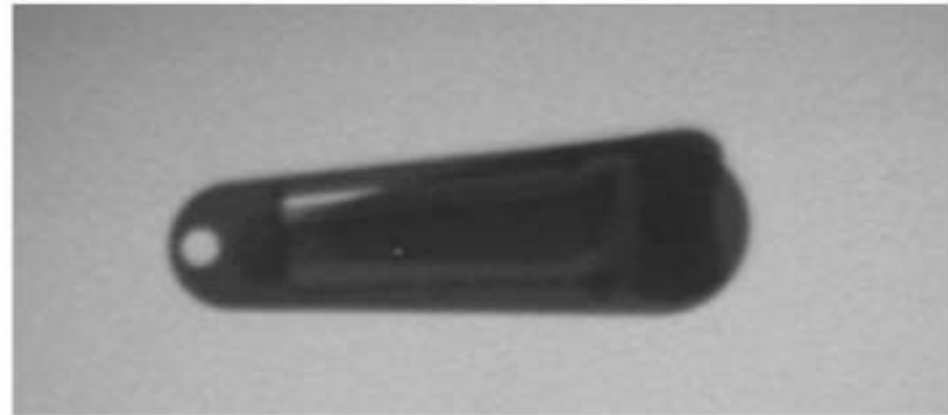


# FOLDING KNIFE

MANUFACTURER:  
COAST KNIVES  
MADE IN TAIWAN

COMPOSITION: METAL  
BLADE AND HANDLE

NOTE: SMALL FOLDING  
KNIFE WITH  
POCKET/MONEY CLIP.

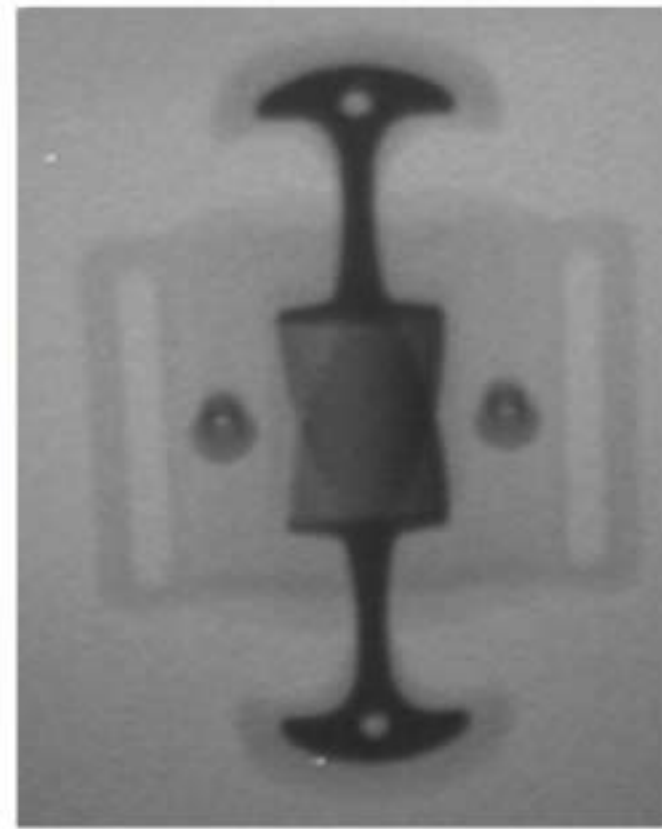


# DOUBLE -HANDED DAGGER

MANUFACTURER:  
UNKNOWN  
MADE IN ?

COMPOSITION:  
METAL BLADE  
WITH PLASTIC  
HANDLE

NOTE: CAN BE  
WORN ON BELT  
OR WITH  
WRIST/ANKLE  
STRAP.





# TOOL CARD

MANUFACTURER:  
UNKNOWN

COMPOSITION:  
PLASTIC CASE  
WITH METAL  
KNIFE BLADE,  
MAGNIFYING  
GLASS, TWO  
SCREWDRIVERS,  
AND FLASHLIGHT

NOTE: DESIGNED  
TO BE THE  
APPROXIMATE  
SIZE OF A CREDIT  
CARD THAT CAN  
BE CARRIED IN A  
POCKET.

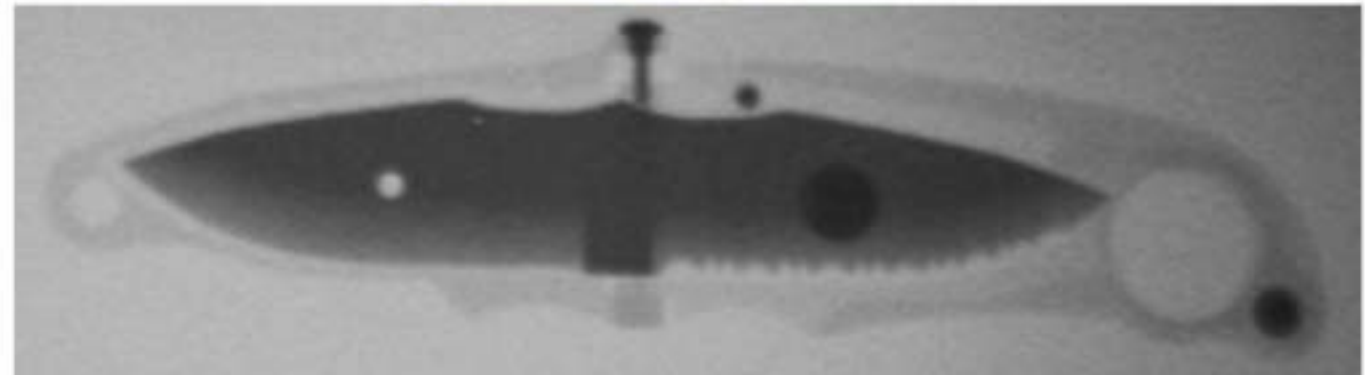


# DUO KNIFE

MANUFACTURER:  
SOG  
MADE IN JAPAN

COMPOSITION:  
REVERSIBLE  
METAL BLADE  
WITH PLASTIC  
HANDLE

NOTE: PLASTIC  
HANDLE FOLDS  
TO EXPOSE  
EITHER PLAIN OR  
SERRATED EDGE  
OF REMOVABLE  
KNIFE BLADE.

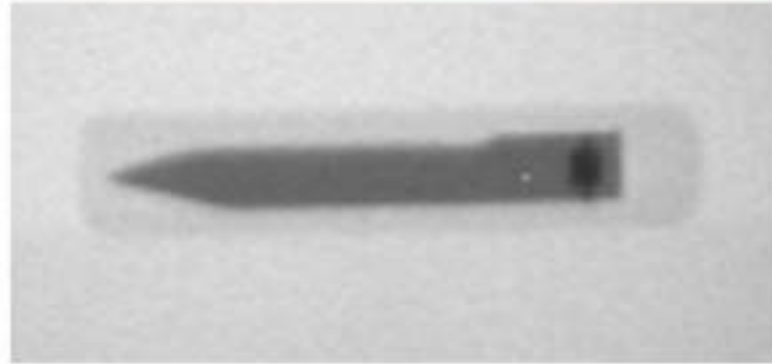


# FLIP KNIFE

MANUFACTURER:  
FLIP-IT  
MADE IN USA

COMPOSITION:  
PLASTIC AND  
METAL

NOTE: KNIFE  
BLADE IS  
DEPLOYED BY  
LIFTING HANDLE  
INSERT, SLIDING IT  
FORWARD,  
AND FLIPPING IT  
OVER TO LOCK THE  
BLADE IN PLACE.

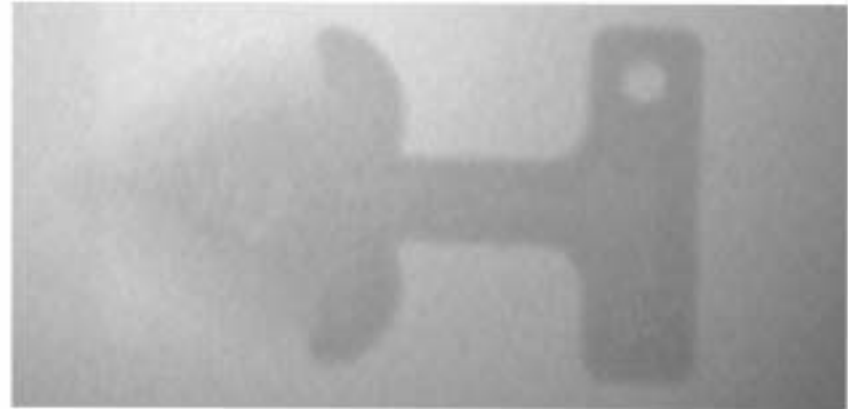


# PUSH DAGGER

MANUFACTURER:  
UNKNOWN  
MADE IN ?

COMPOSITION: PLASTIC

NOTE: ALL PLASTIC,  
MAKING THIS "INVISIBLE"  
TO A MAGNATOMETER.

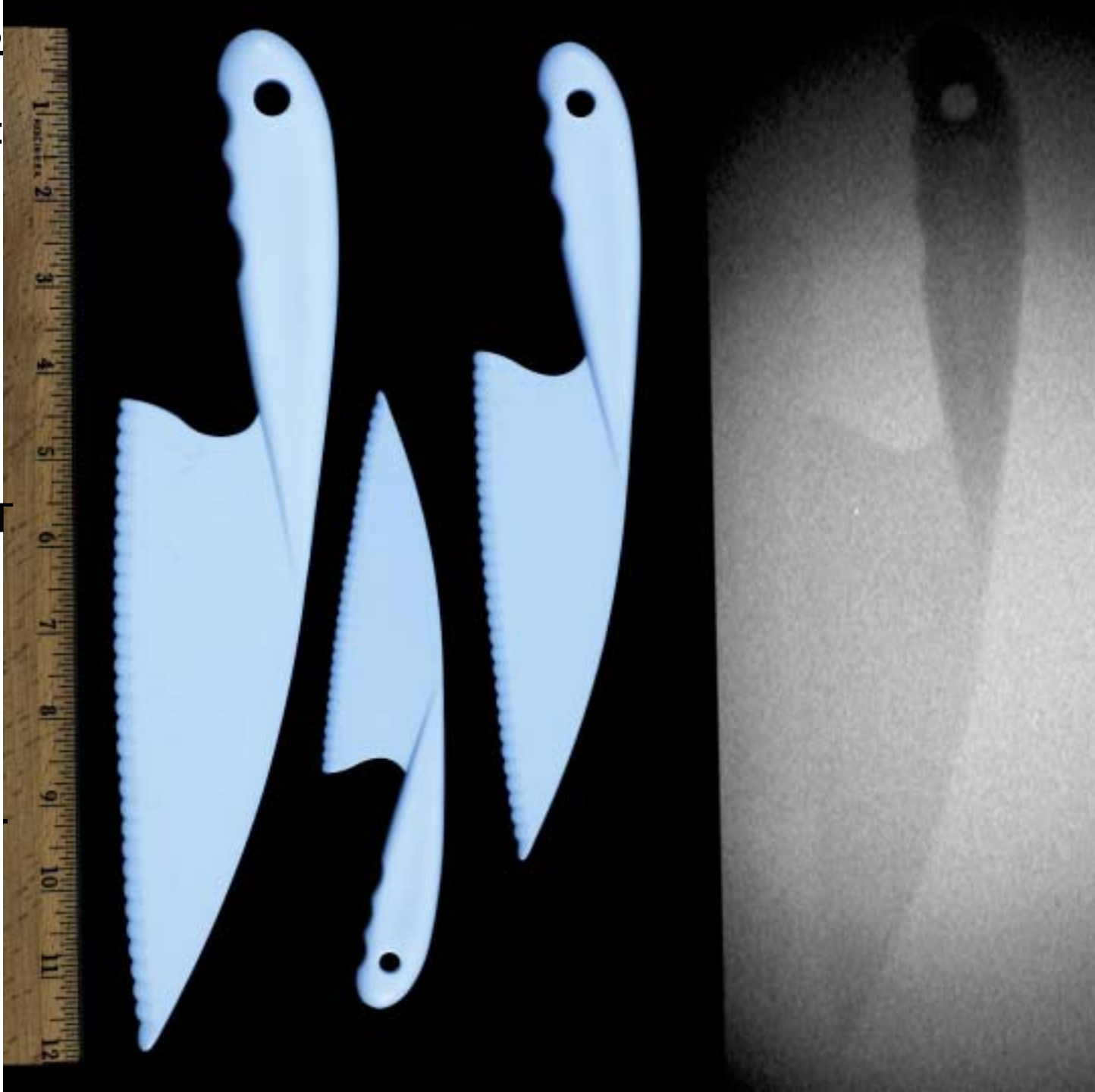


# LETTUCE KNIVES

MANUFACTURER:  
UNKNOWN  
MADE IN ?

COMPOSITION:  
PLASTIC

NOTE:  
INEXPENSIVE SET  
OF THREE  
VARIOUS-SIZED  
KNIVES WHICH  
ARE "INVISIBLE"  
TO A  
MAGNATOMETER.

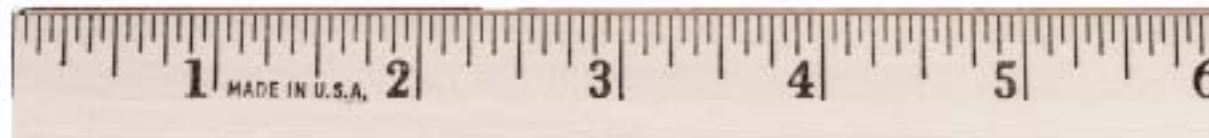


# LIGHTER KNIFE

MANUFACTURER:  
UNKNOWN  
MADE IN ?

COMPOSITION: METAL

NOTE: WORKING LIGHTER  
THAT DEPLOYS A KNIFE  
BLADE BY ACTIVATION OF  
A BUTTON ON THE SIDE.





# LIGHTER KNIFE

MANUFACTURER:  
UNKNOWN  
MADE IN ?

COMPOSITION:  
METAL

NOTE: WORKING  
LIGHTER THAT  
DEPLOYS A KNIFE  
BLADE BY  
ACTIVATION OF A  
BUTTON ON THE  
SIDE.



# LIGHTER KNIFE

MANUFACTURER:  
HOWELL  
MADE IN KOREA

COMPOSITION:  
METAL

NOTE: WORKING  
LIGHTER THAT  
STORES A KNIFE  
BLADE, NAIL FILE,  
AND SCISSORS.



# CIGARETTE LIGHTER KNIFE

MANUFACTURER:  
UNKNOWN  
MADE IN ?

COMPOSITION:  
METAL KNIFE  
BLADE IN METAL CASE  
HANDLE

NOTE: THIS WORKING  
LIGHTER CONCEALS AN  
AUTOMATIC KNIFE.

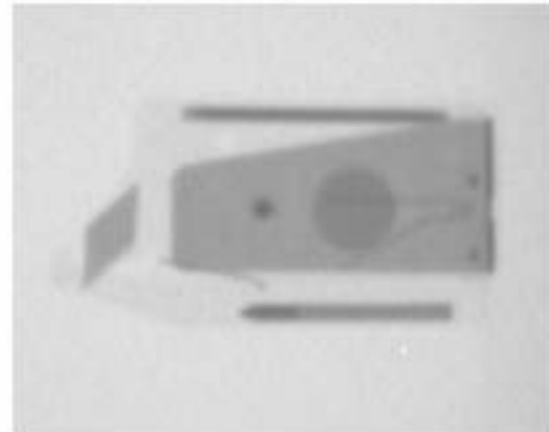
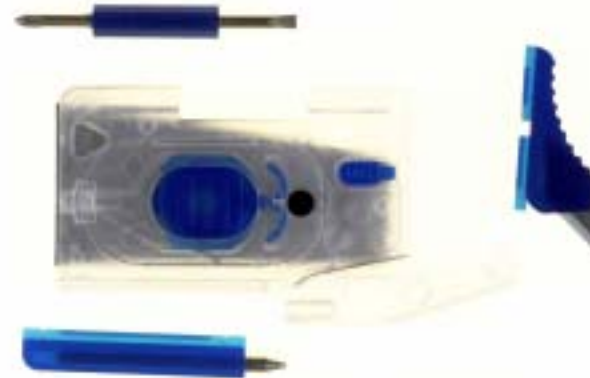
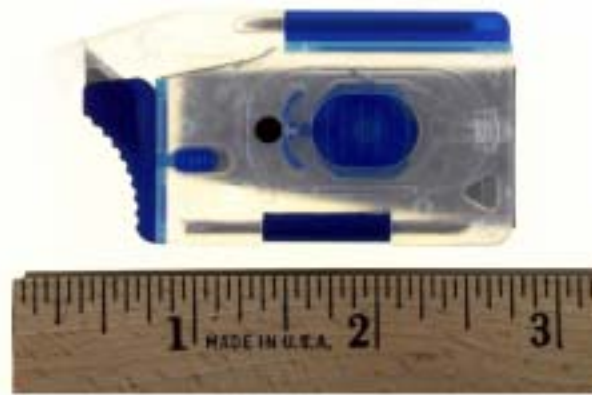


# TOOL CARD/MONEY CLIP

MANUFACTURER:  
UNKNOWN  
MADE IN USA

COMPOSITION:  
PLASTIC AND METAL

NOTE: THIS MONEY  
CLIP STORES A  
BLADE, TWO  
SCREWDRIVERS,  
AND A FLASHLIGHT.

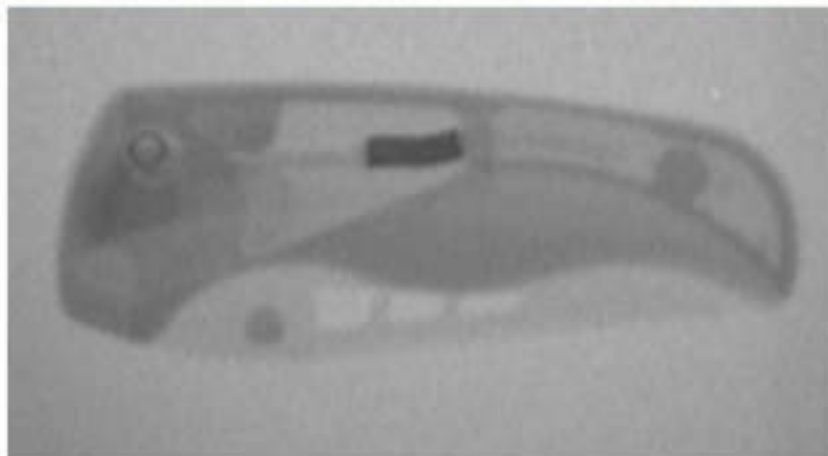


**PLASTIC FOLDING**  
**KNIFE**

MANUFACTURER:  
MEYERCO  
MADE IN USA

COMPOSITION:  
PLASTIC AND  
METAL

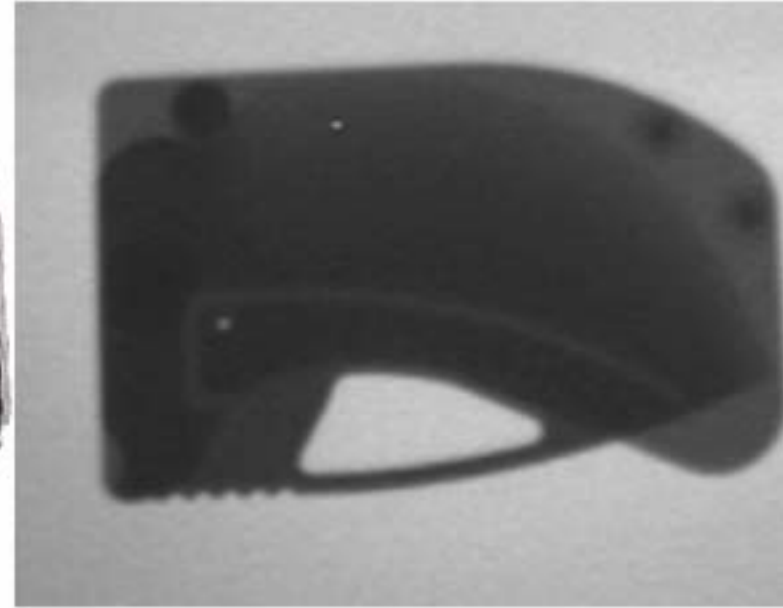
NOTE: THE KNIFE IS  
ALL-PLASTIC  
CONSTRUCTION,  
EXCEPT FOR A  
SMALL SPRING TO  
ASSIST IN OPENING



# CARD KNIFE

MANUFACTURER:  
UNKNOWN  
MADE IN USA

COMPOSITION:  
PLASTIC AND  
METAL



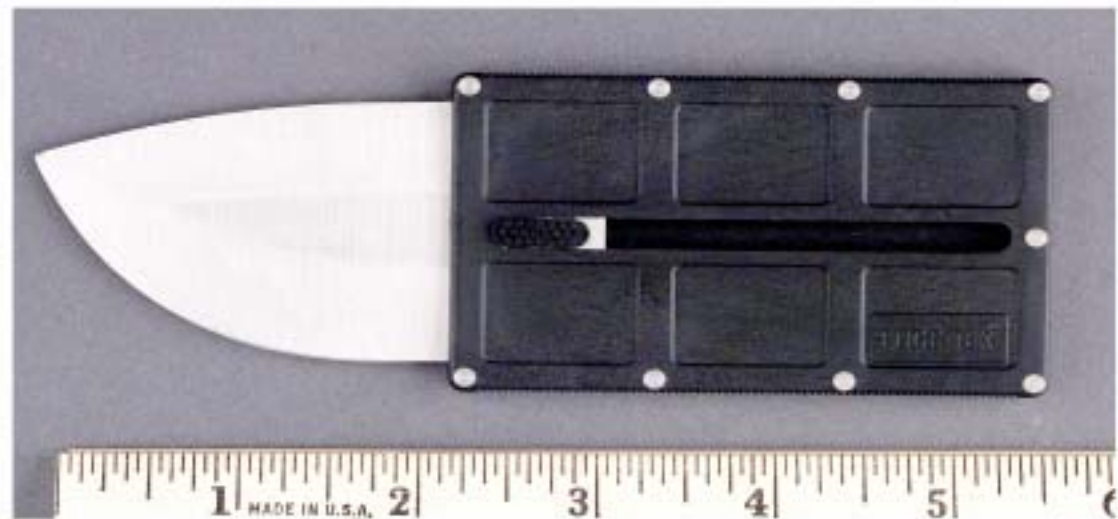
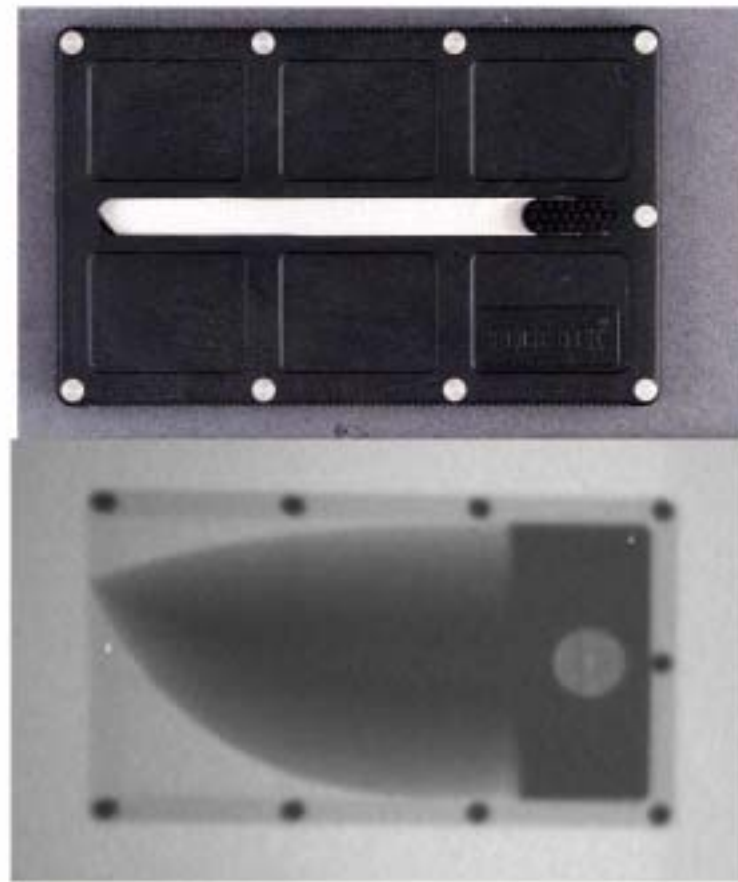


# CARD KNIFE

MANUFACTURER:  
EDGE-TEK  
MADE IN USA

COMPOSITION: PLASTIC  
AND METAL

NOTE: BLADE SLIDES  
OUT OF HANDLE.

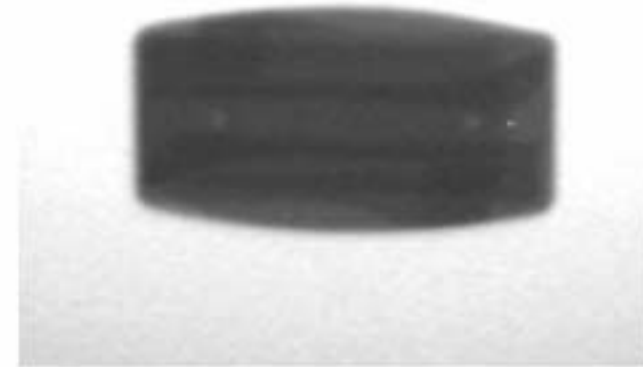


# MONEY CLIP KNIFE

MANUFACTURER:  
ZIPPO  
MADE IN USA

COMPOSITION:  
METAL

NOTE: MONEY-CLIP  
HOUSES A KNIFE  
BLADE AND NAIL  
FILE.

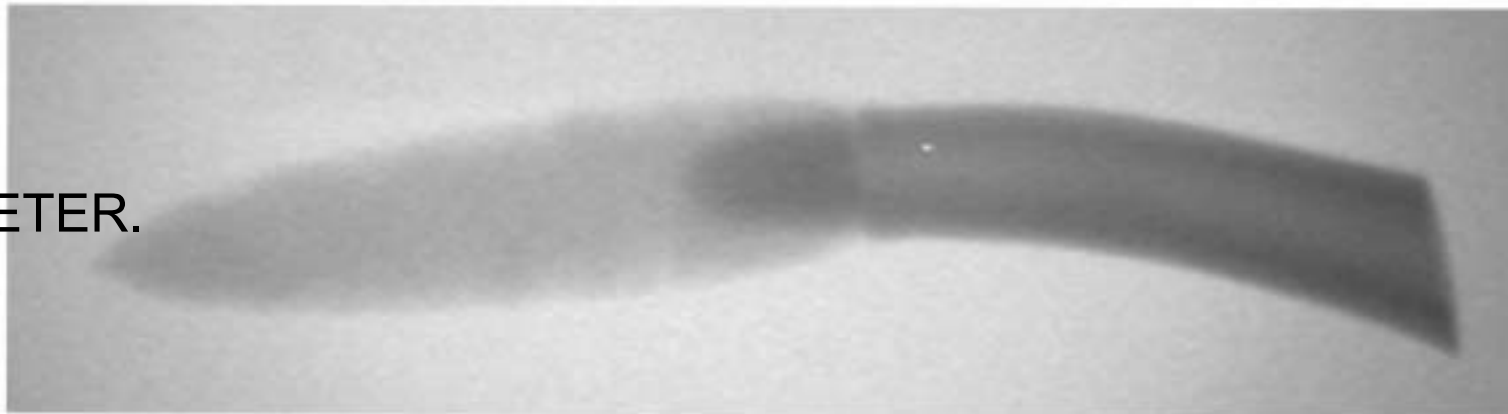


# OBSIDIAN KNIFE

MANUFACTURER:  
THESE KNIVES ARE  
CUSTOM MADE

COMPOSITION:  
OBSIDIAN BLADE  
WITH A BONE  
HANDLE

NOTE: THERE  
IS NO METAL  
USED IN THIS  
KNIFE,  
MAKING IT  
"INVISIBLE" TO  
A MAGNATOMETER.

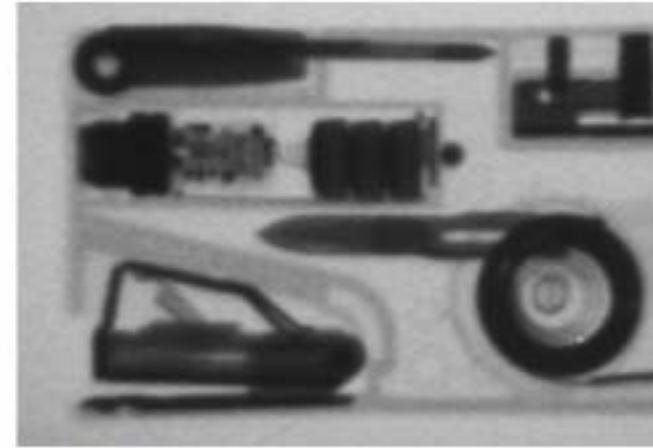


# OFFICE COMPANION

MANUFACTURER:  
MADE IN USA

COMPOSITION:  
PLASTIC AND  
METAL

NOTE: LOOKS  
LIKE AN INK PEN  
WHICH CAN  
EJECT PEPPER  
SPRAY.

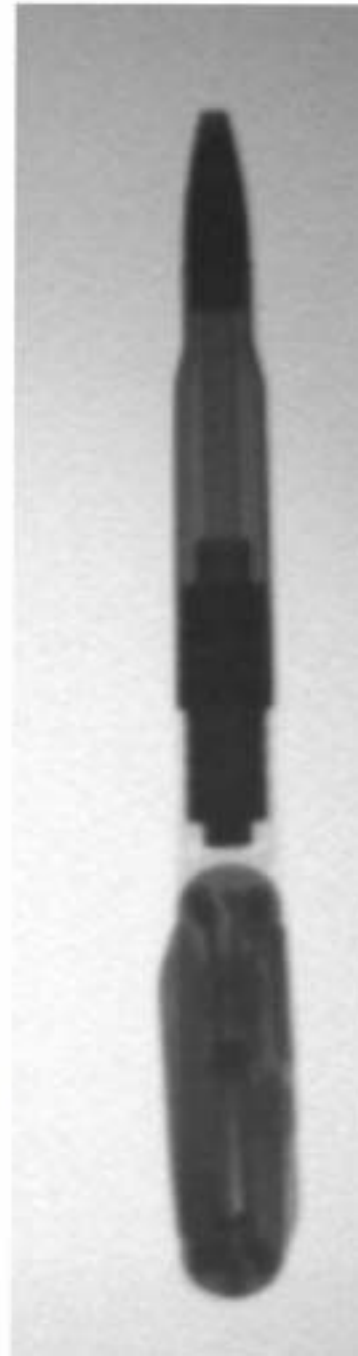


# INK PEN KNIFE

MANUFACTURER:  
VICTORINOX  
MADE IN  
SWITZERLAND

COMPOSITION:  
METAL BLADE  
WITH PLASTIC  
HANDLE

NOTE: KNIFE  
BLADE, NAIL FILE,  
SCISSORS, AND  
FLASHLIGHT ALL  
STORED IN PEN  
HANDLE. PEN  
LOOKS LIKE A  
RIFLE CARTRIDGE.



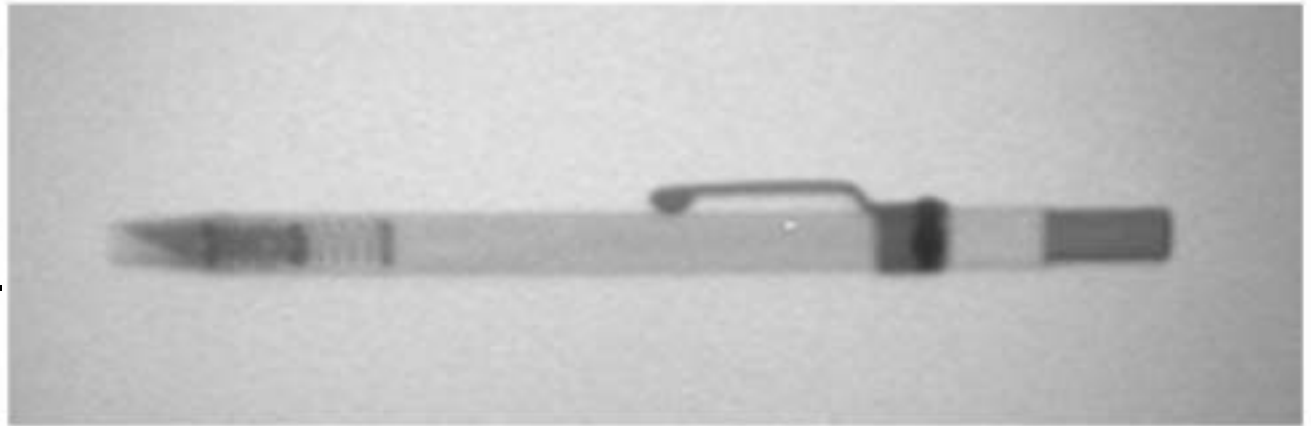
# RAZOR KNIFE

MANUFACTURER:  
X-CALIBRE  
MADE IN ?



COMPOSITION:  
ALL METAL

NOTE: LOOKS  
LIKE AN INK PEN.  
PUSH BUTTON  
DEPLOYS BLADE.





# INK PEN KNIFE

MANUFACTURER:  
UNKNOWN  
MADE IN USA

COMPOSITION:  
METAL

NOTE: LOOKS LIKE  
AN INK PEN.  
KNIFE BLADE  
FOLDS IN THE  
SIDE OF THE  
PEN.

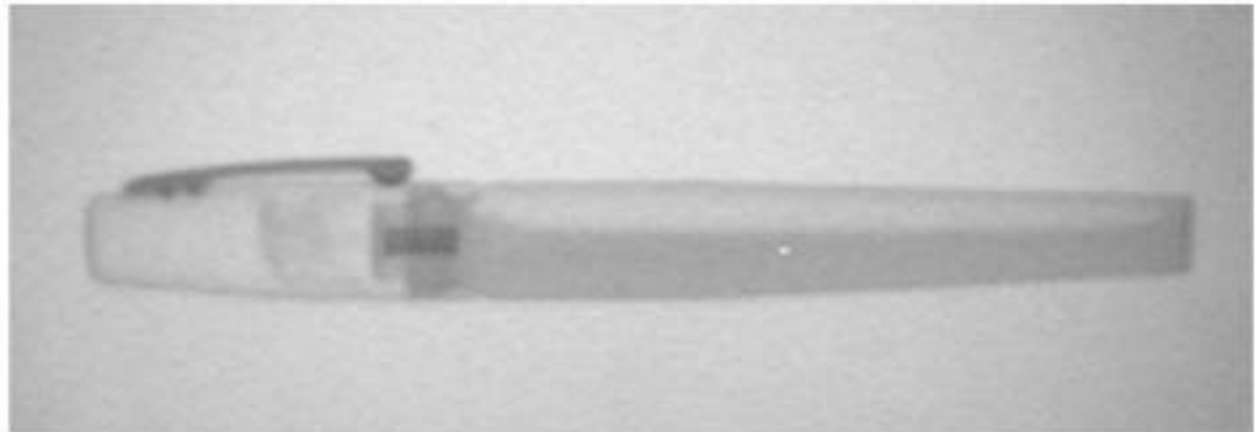


# INK PEN PEPPER SPRAY

MANUFACTURER:  
UNKNOWN  
MADE IN USA



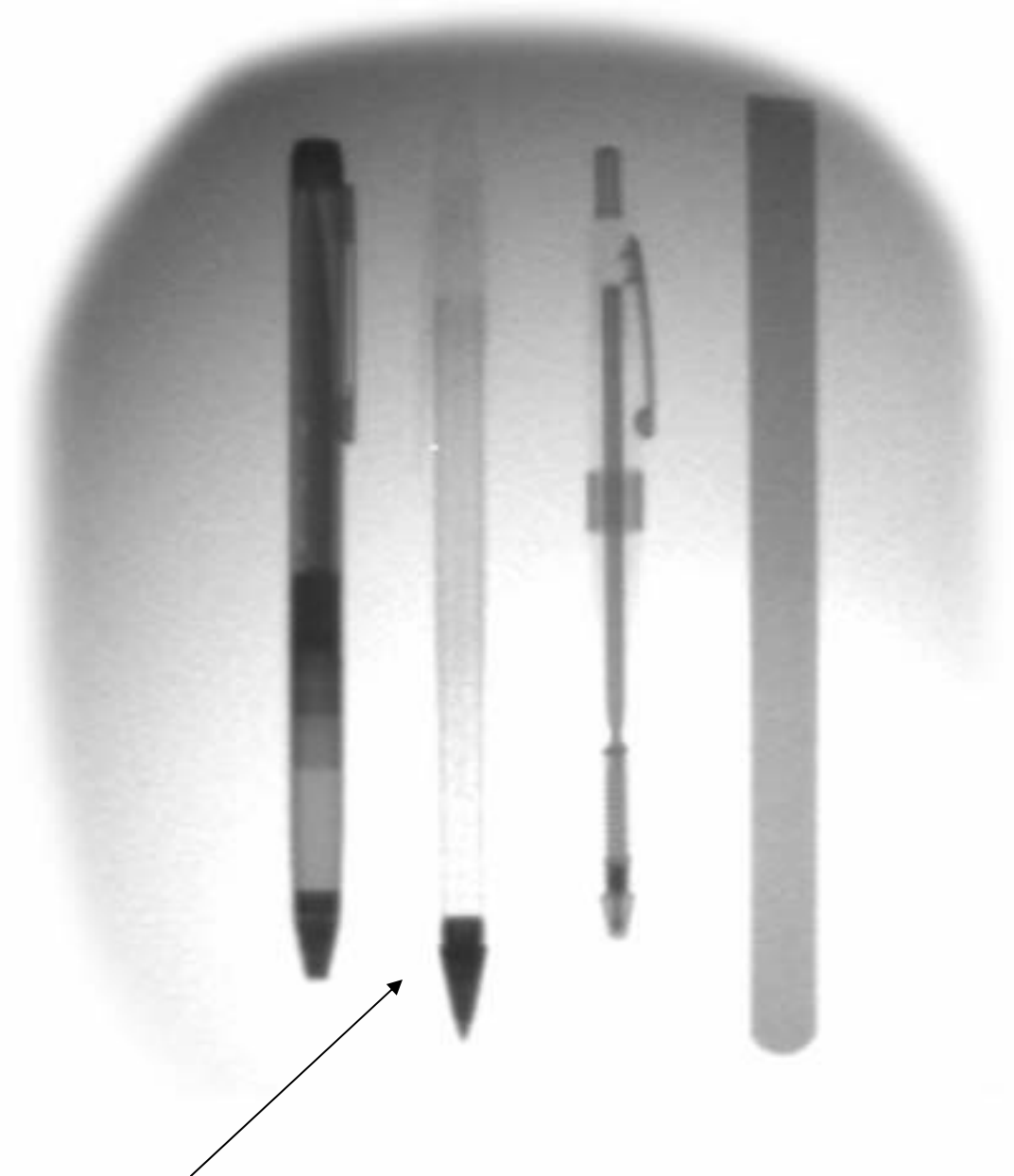
COMPOSITION:  
PLASTIC AND  
METAL



NOTE: LOOKS LIKE  
AN INK PEN WHICH  
CAN EJECT  
PEPPER SPRAY.



Xray of PENKNIFE with  
other pens; penknife is the  
second from the left.



# PEN-TYPE KNIVES IN A POCKET

NOTE: THIS  
PHOTOGRAPH  
SHOWS THE  
PROFILE OF THE  
VARIOUS  
PENKNIVES WHEN  
CARRIED IN A  
POCKET.

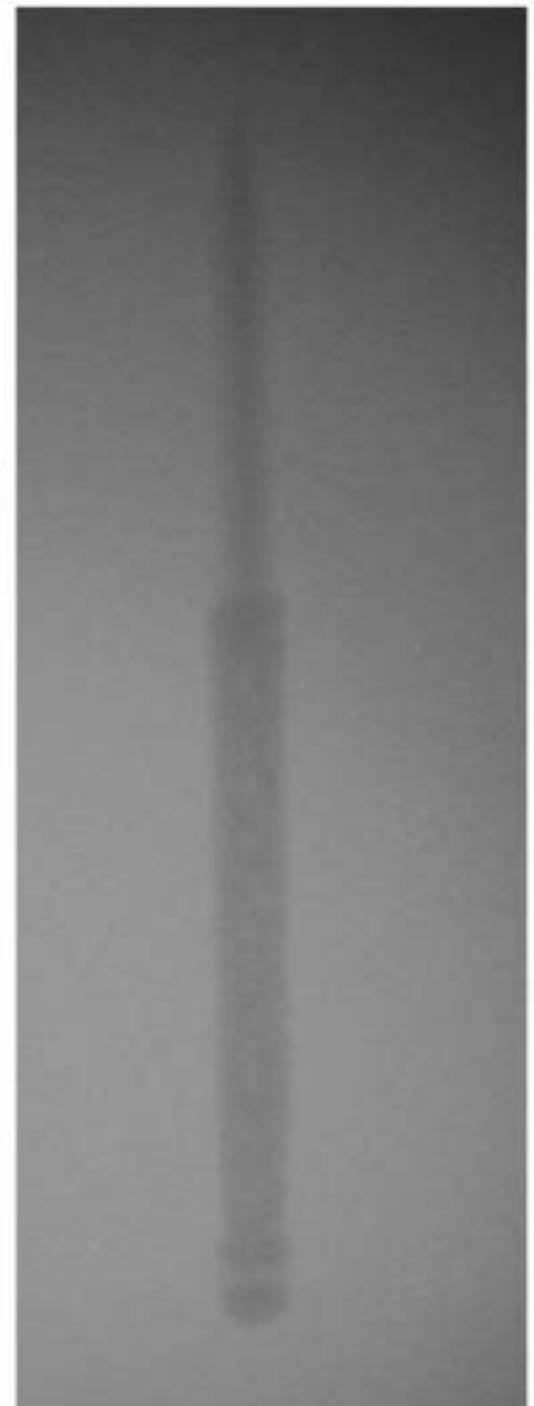


# PLASTIC SPIKE

MANUFACTURER:  
UNKNOWN  
MADE IN ?

COMPOSITION:  
POLYMER/PLASTIC

NOTE: ALL-PLASTIC  
SPIKE (DAGGER),  
MAKING IT "INVISIBLE"  
TO A  
MAGNATOMETER.

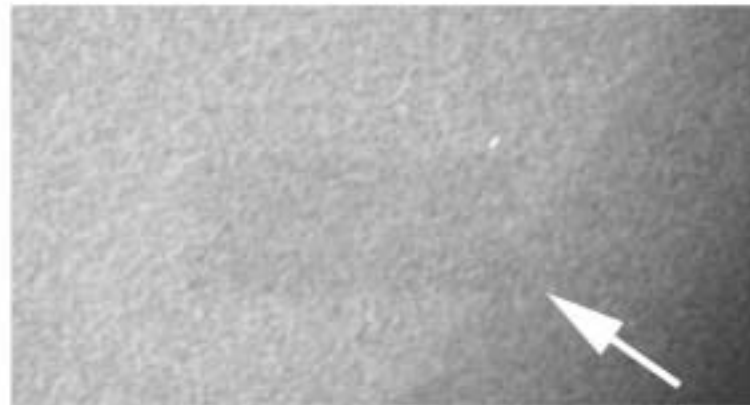
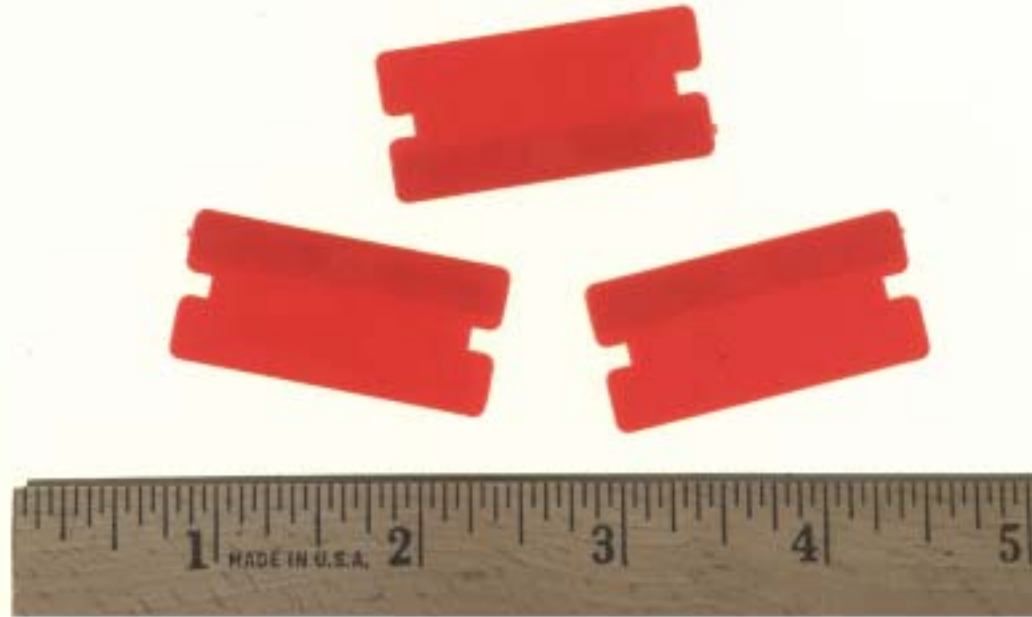


# PLASTIC RAZOR BLADES

MANUFACTURER:  
UNKNOWN  
MADE IN CHINA

COMPOSITION:  
PLASTIC

NOTE: SAME SIZE  
AS STANDARD  
RAZOR BLADES.  
ALL PLASTIC,  
MAKING IT  
“INVISIBLE” TO A  
MAGNATOMETER.



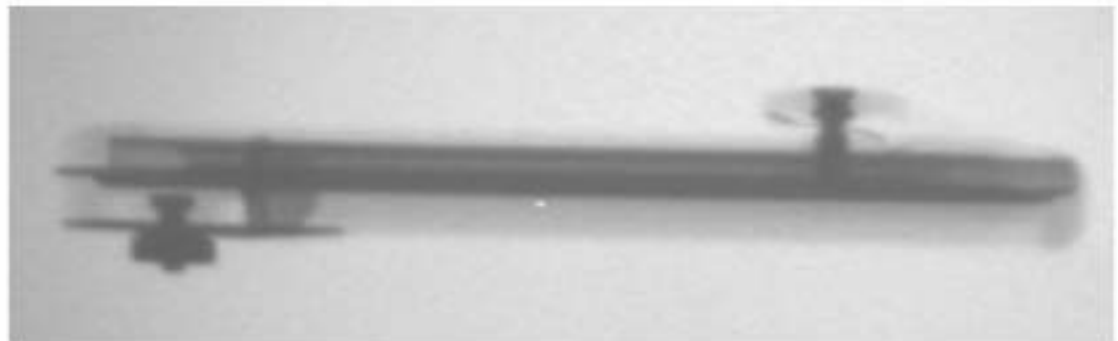
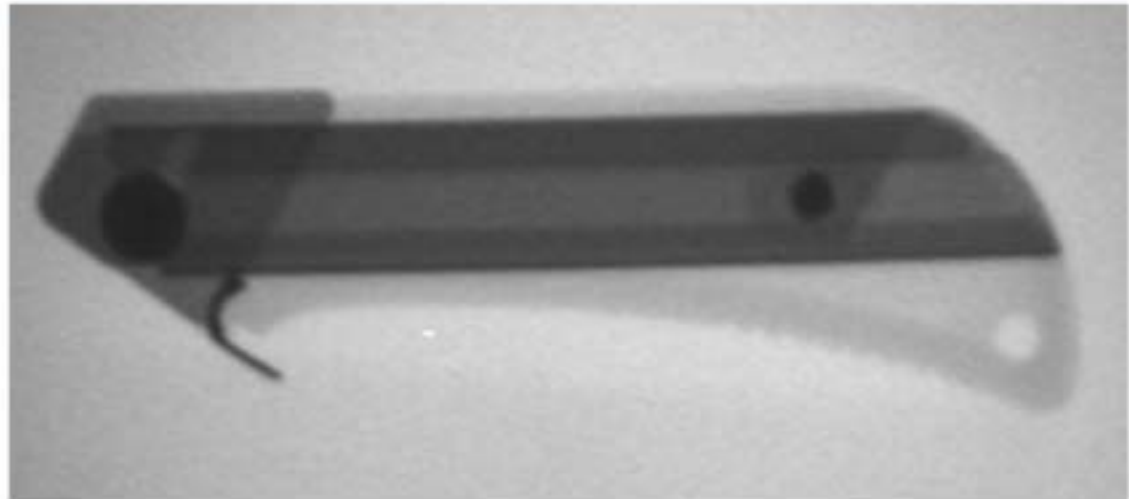


# BOX CUTTER KNIFE

MANUFACTURER:  
OLFA  
MADE IN JAPAN

COMPOSITION:  
METAL RAZOR BLADE  
WITH PLASTIC  
HANDLE

NOTE: RAZOR BLADE  
SLIDES OUT OF  
HANDLE.

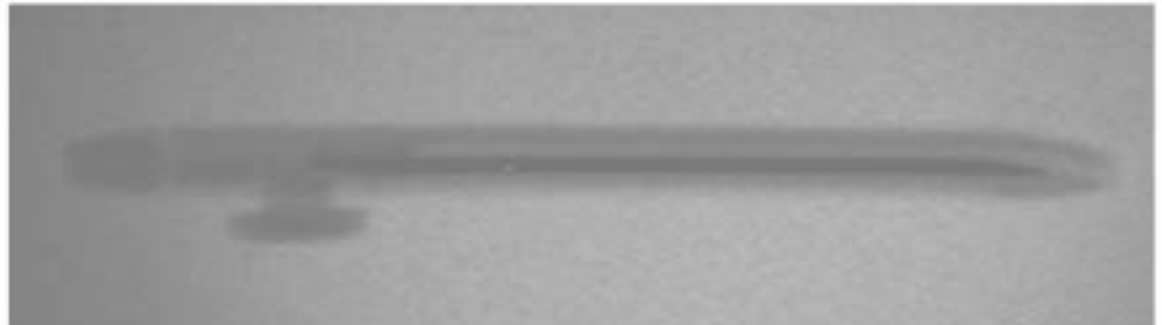
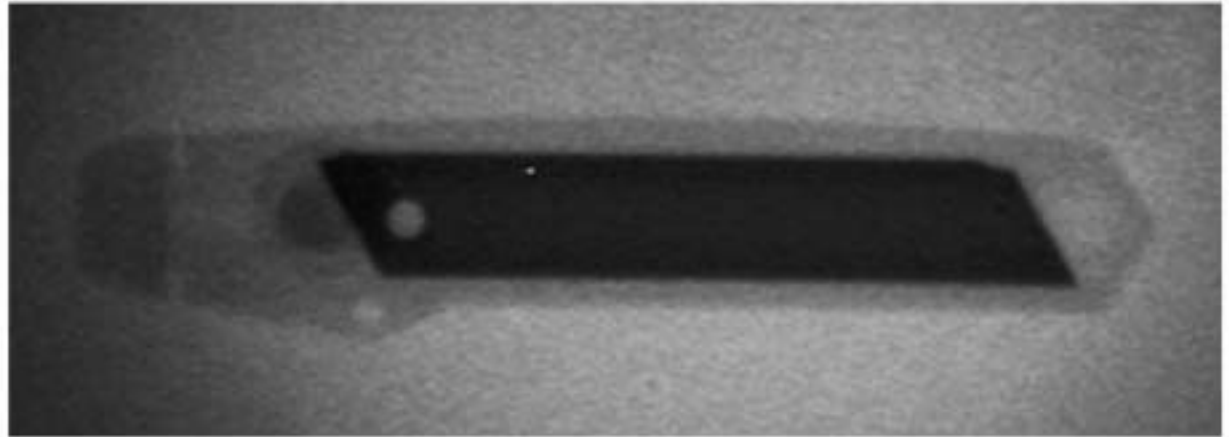


# RAZOR KNIFE

MANUFACTURER:  
UNKNOWN  
MADE IN TAIWAN

COMPOSITION:  
METAL RAZOR  
BLADE WITH  
PLASTIC HANDLE

NOTE: RAZOR  
BLADE SLIDES OUT  
OF HANDLE.



**BULLET (CARTRIDGE)**  
**KNIFE**

MANUFACTURER:  
UNITED CUTLERY  
MADE IN ITALY

COMPOSITION: METAL  
BLADE INSIDE OF METAL  
CARTRIDGE

NOTE: LOOKS LIKE A  
RIFLE CARTRIDGE.  
HEADSTAMP READS  
"30-06 SPRG".



# RING KNIFE

MANUFACTURER  
BATES  
MADE IN USA

COMPOSITION:  
METAL BLADE  
WITH RING

NOTE: BLADE  
ATTACHED TO A  
RING.  
COMMONLY  
USED TO  
CUT STRINGS ON  
PACKAGES AND  
HAY BAILS.

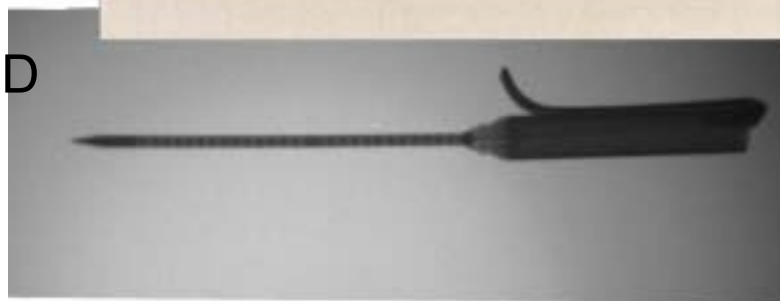


# SHUCKRA

MANUFACTURER:  
UNKNOWN  
MADE IN ?

COMPOSITION:  
METAL

NOTES: BY  
LOCKING THE  
HANDLE, PUTTING  
ON AN INTERNAL  
WIRE, THIS DEVICE  
BECOMES TAUT  
AND MAY BE USED  
AS A SPIKE.

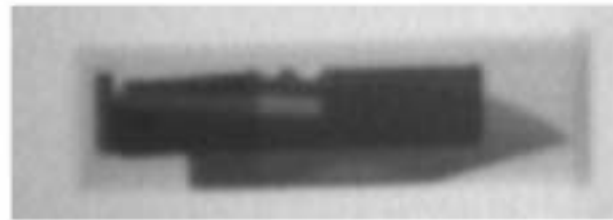


**SHOTSHELL**  
**KNIFE**

MANUFACTURER:  
UNITED CUTLERY  
MADE IN ITALY

COMPOSITION:  
METAL BLADE  
INSIDE PLASTIC  
SHOTSHELL

NOTE: LOOKS  
LIKE A  
SHOTSHELL FOR  
A SHOTGUN.  
HEADSTAMP  
READS "12-GA  
REMINGTON  
PETERS".



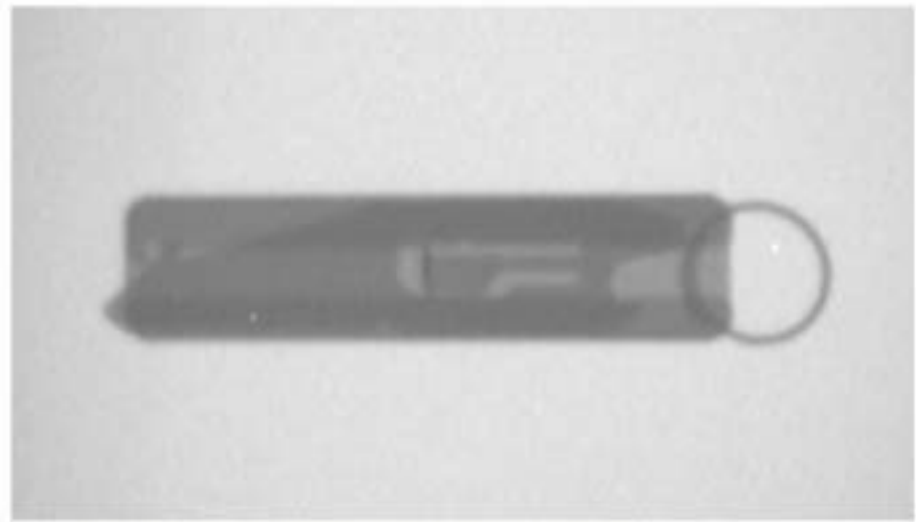


# SLIDER KNIFE

MANUFACTURER: UNKNOWN  
MADE IN USA

COMPOSITION: METAL  
RAZOR BLADE WITH METAL  
HANDLE

NOTE: HANDLE LOOKS LIKE A  
RULER. THE BLADE HAS A  
LOCK BUTTON WHICH  
ALLOWS THE KNIFE TO BE  
DEPLOYED.



**SOG ACCESS**  
**CARD**

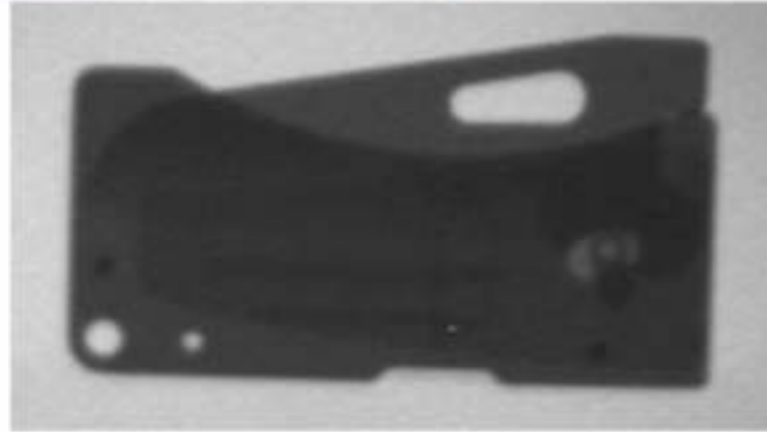
MANUFACTURER:  
SOG  
MADE IN JAPAN



COMPOSITION:  
METAL BLADE AND  
HANDLE



NOTE: THIS KNIFE  
HOUSES  
TWEEZERS,  
TOOTHPICK, AND  
STRAIGHT PIN.

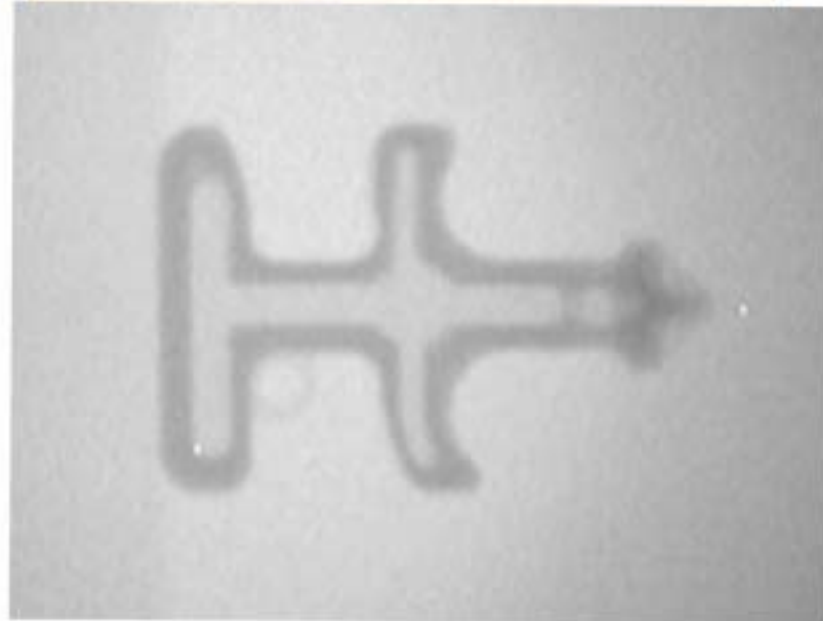


**STINGER KEY**  
**CHAIN**

MANUFACTURER:  
SHOMER-TEC  
MADE IN USA

COMPOSITION: ALL  
POLYMER/PLASTIC  
STRIKING TOOL

NOTE: COMES IN  
BLACK, BLUE OR  
CLEAR. ALL-  
PLASTIC  
CONSTRUCTION,  
MAKING IT  
“INVISIBLE” TO A  
MAGNATOMETER.

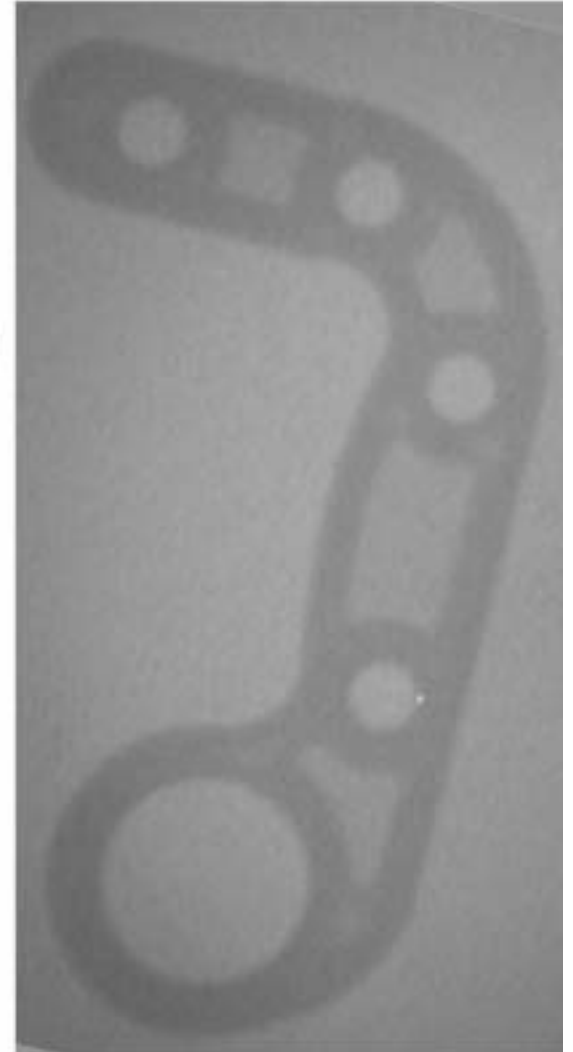


# IMPACT KERAMBIT

MANUFACTURER:  
SHOMER-TEC  
MADE IN USA

COMPOSITION: ALL  
POLYMER/PLASTIC

NOTE: THIS IMPACT  
TOOL IS MADE OF  
PLASTIC, MAKING IT  
“INVISIBLE” TO A  
MAGNATOMETER.

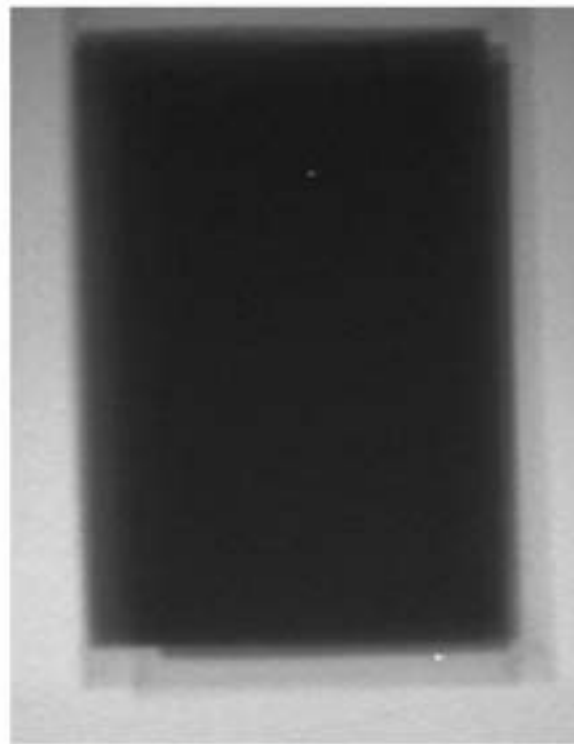


# THROWING CARDS

MANUFACTURER:  
UNKNOWN  
MADE IN ?

COMPOSITION:  
METAL

NOTE: THESE CARDS  
ARE REGULAR SIZED  
BUT THEY ARE ALL  
METAL AND EDGED  
ON  
ALL SIDES,  
DESIGNED TO BE  
THROWN AT A  
TARGET.



**TITANIUM**  
**CHARGE CARD**  
**PLUS**

MANUFACTURER:  
SHOMER-TEC  
MADE IN USA

COMPOSITION:  
METAL

NOTE: EDGED ON  
ONE SIDE, THIS  
CARD IS  
DESIGNED TO FIT  
IN YOUR WALLET  
AS A CREDIT  
CARD.



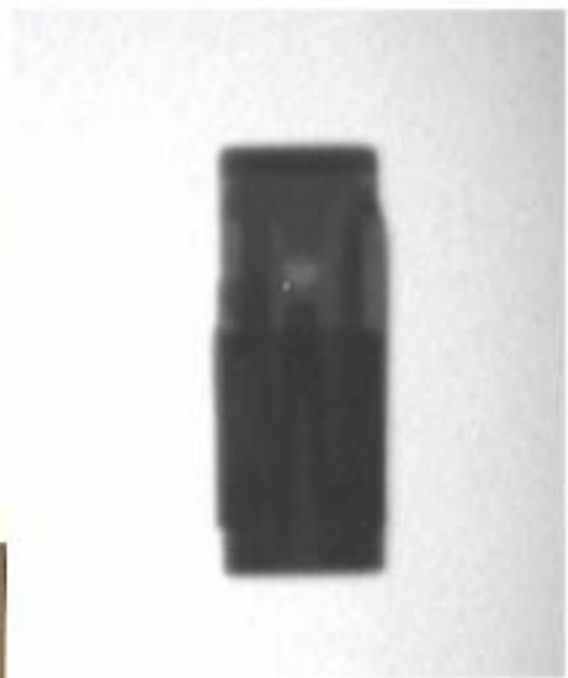


**MONEY CLIP**

MANUFACTURER:  
KERSHAW  
MADE IN JAPAN

COMPOSITION:  
METAL

NOTE: MONEY CLIP  
CONCEALS A  
BLADE, NAIL FILE,  
AND SCISSORS.



# LIPSTICK

MANUFACTURER:  
UNITED CUTLERY  
MADE IN TAIWAN

COMPOSITION:  
PLASTIC CASE  
WITH METAL BAND

NOTE:  
APPEARS TO BE A  
COSMETIC;  
BLADE EXTENDS  
BY SLIDING THE  
BUTTON ALONG  
THE SIDE OF THE  
CASE.

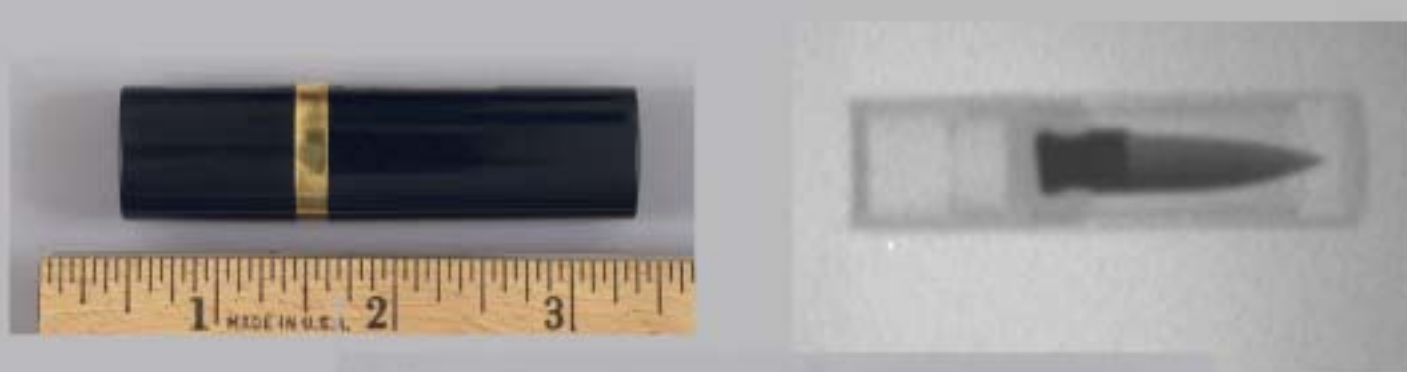


# LIPSTICK

MANUFACTURER:  
UNITED CUTLERY  
MADE IN TAIWAN

COMPOSITION:  
PLASTIC CASE WITH  
METAL BAND

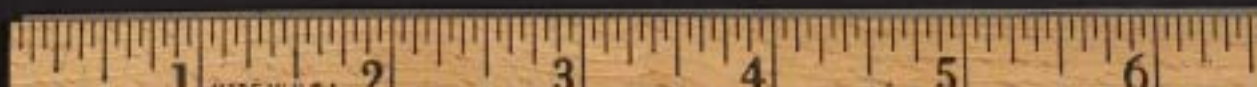
NOTE:  
APPEARS TO BE A  
COSMETICS, BLADE  
EXTENDS BY  
TWISTING THE  
CASE.



# CARD KNIFE

MANUFACTURER:  
SPYDERCO  
MADE IN JAPAN  
COMPOSITION:  
METAL

NOTE: MANY  
COMPANIES  
MAKE CREDIT  
CARD-SIZED  
KNIVES, STYLES  
VARY BY  
MANUFACTURER.



# PLASTIC KNIFE

MANUFACTURER:  
LANSKY  
MADE IN USA

COMPOSITION:  
PLASTIC

NOTE:  
KNIVES SIMILAR  
TO THIS ARE MADE  
BY OTHER  
COMPANIES,  
STYLE OF KNIFE  
MAY VARY BY  
MANUFACTURER.

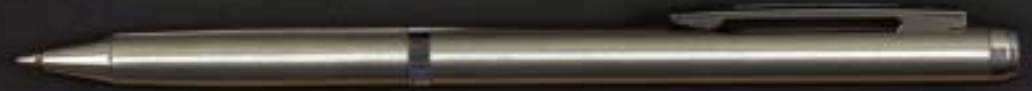


# PENKNIFE

MANUFACTURER:  
UNITED CUTLERY  
MADE IN TAIWAN

COMPOSITION:  
METAL

NOTE:  
STYLES VARY TO  
INCLUDE  
DIFFERENT  
BLADE STYLES  
AND CASE  
COLORS.



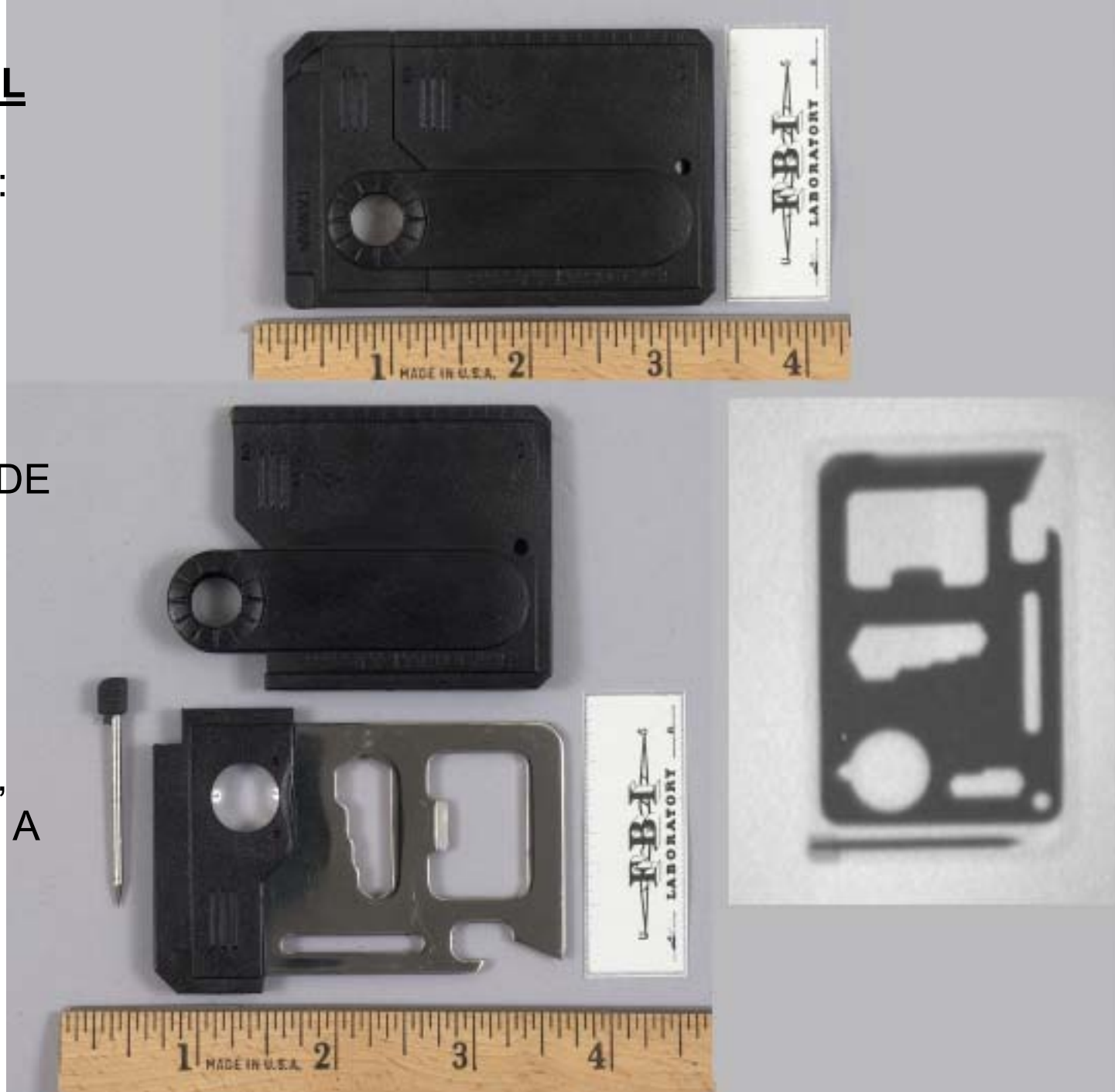


**CREDIT CARD  
STYLE UTILI-TOOL**

MANUFACTURER:  
UNKNOWN  
MADE IN TAIWAN

COMPOSITION:  
PLASTIC CASE  
WITH METAL BLADE

NOTE:  
INCLUDES A CAN  
OPENER,  
SCREWDRIVER,  
BOTTLE OPENER,  
WRENCHES, AND A  
MAGNIFYING  
GLASS.



# COMB

MANUFACTURER:  
UNITED CUTLERY  
MADE IN TAIWAN

COMPOSITION:  
PLASTIC

NOTE:  
APPEARS TO BE A  
NORMAL COMB.  
HANDLE PULLS  
FROM HEAD WHICH  
ACTS AS A SHEATH.



# HAIRBRUSH

MANUFACTURER:  
UNITED CUTLERY  
MADE IN TAIWAN

COMPOSITION:  
PLASTIC

NOTE:  
APPEARS TO BE  
A NORMAL  
HAIRBRUSH.  
HANDLE PULLS  
FROM HEAD  
WHICH ACTS AS  
A SHEATH.



**BOX CUTTER**  
**KNIFE**

MANUFACTURER:  
OLFA  
MADE IN JAPAN

COMPOSITION:  
PLASTIC CASE  
WITH METAL  
BLADE

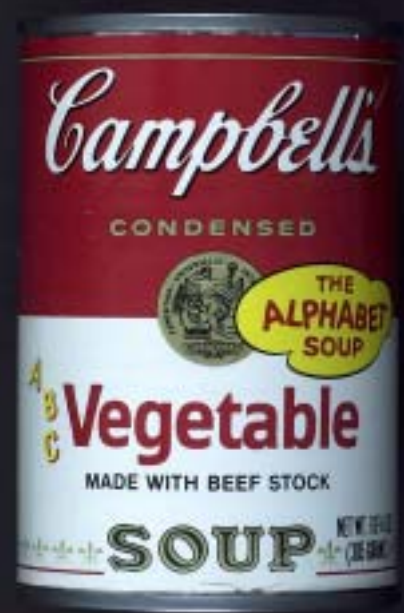
NOTE:  
COLORS AND  
STYLES VARY.



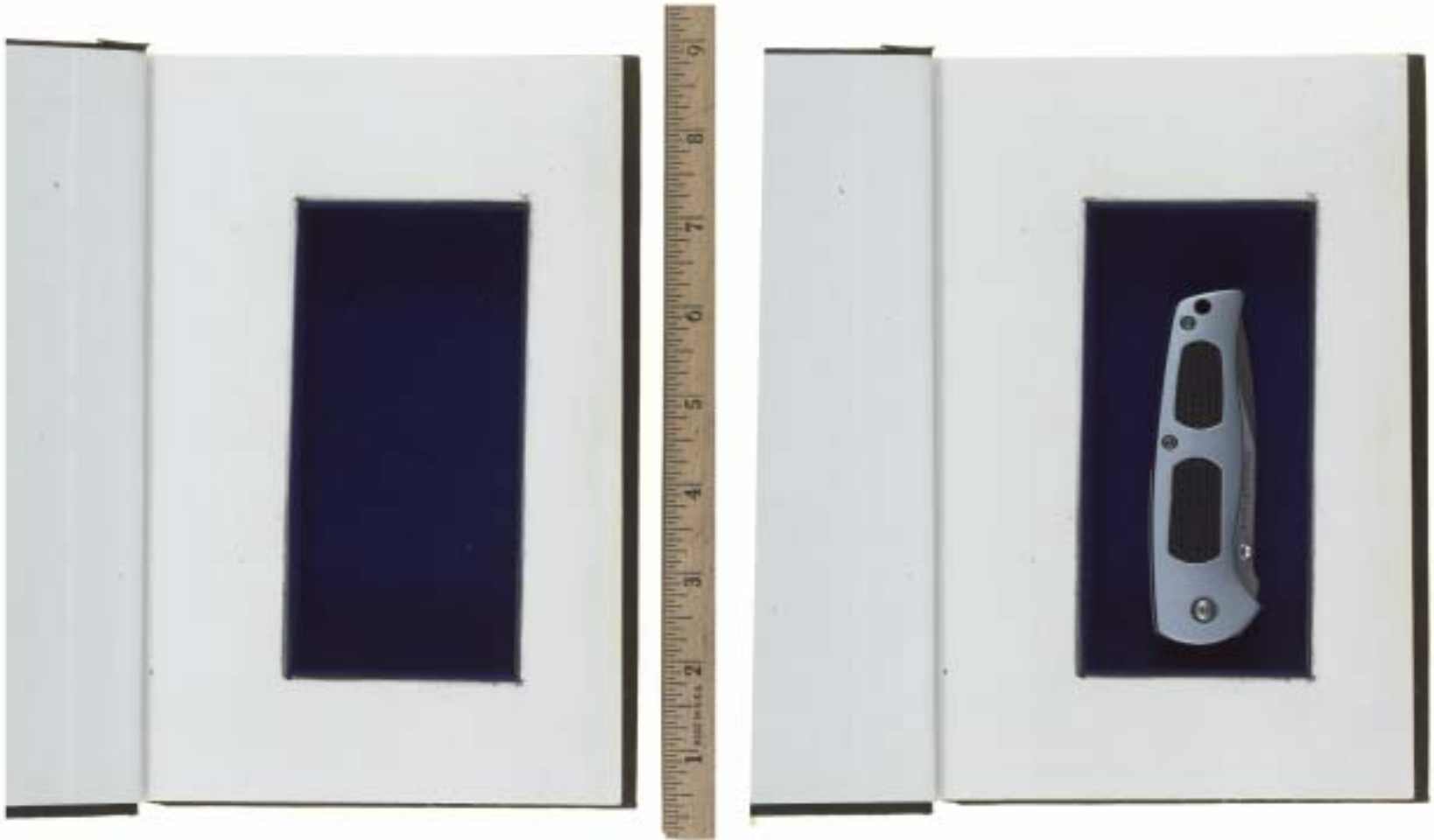




THIS CAN SAFE OPENS AT THE BOTTOM TO STORE ITEMS INSIDE.







THIS IS AN EXAMPLE OF A BOOK SAFE  
THE PAGES ARE ONE SOLID PIECE AND  
ARE HOLLOWED OUT ON THE INSIDE.

# PAGER PAL HOLSTER

MANUFACTURER:  
PAGER PAL  
MADE IN USA

COMPOSITION:  
FAKE PLASTIC "PAGER" WITH  
LEATHER HOLSTER

NOTE: THIS INSIDE THE PANTS  
HOLSTER CAN BE USED WITH  
THE PROVIDED FAKE PAGER  
OR A REAL ONE. THE HOLSTER  
CAN ALSO HOLD SMALL  
FIREARMS AND/OR KNIVES.



Any information concerning these knives or cutting tools not shown  
in this booklet can be forwarded to:

**FEDERAL BUREAU OF INVESTIGATION  
LABORATORY DIVISION  
FIREARMS/TOOLMARKS UNIT  
2501 INVESTIGATION PARKWAY  
QUANTICO, VA 22135  
(703) 632-7225/6**

